



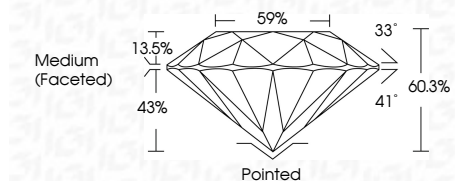
ELECTRONIC COPY

LG789642147
Report verification at igi.org



April 14, 2026
IGI Report Number **LG789642147**
Description **LABORATORY GROWN DIAMOND**
Shape and Cutting Style **ROUND BRILLIANT**
Measurements **6.53 - 6.57 X 3.95 MM**

GRADING RESULTS
Carat Weight **1.04 CARAT**
Color Grade **D**
Clarity Grade **VS 1**
Cut Grade **IDEAL**



ADDITIONAL GRADING INFORMATION
Polish **EXCELLENT**
Symmetry **EXCELLENT**
Fluorescence **NONE**
Inscription(s) **IGI LG789642147**
Comments: This Laboratory Grown Diamond was created by Chemical Vapor Deposition (CVD) growth process. Type IIa

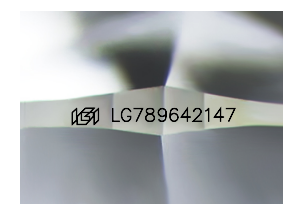
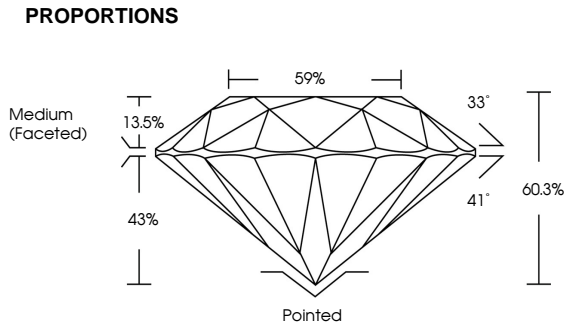


April 14, 2026
IGI Report No LG789642147
ROUND BRILLIANT
6.53 - 6.57 X 3.95 MM
1.04 CARAT
D
VS 1
IDEAL
60.3%
59%
Medium (Faceted)

Pointed
EXCELLENT
EXCELLENT
NONE
IGI LG789642147

Comments: This Laboratory Grown Diamond was created by Chemical Vapor Deposition (CVD) growth process. Type IIa

April 14, 2026
IGI Report Number **LG789642147**
Description **LABORATORY GROWN DIAMOND**
Shape and Cutting Style **ROUND BRILLIANT**
Measurements **6.53 - 6.57 X 3.95 MM**
GRADING RESULTS
Carat Weight **1.04 CARAT**
Color Grade **D**
Clarity Grade **VS 1**
Cut Grade **IDEAL**



Sample Image Used

COLOR
D E F G H I J Faint Very Light Light

CLARITY
FL IF VS¹⁻² VS¹⁻² SI¹⁻² I¹⁻³
Flawless Internally Flawless Very Very Slightly Included Very Slightly Included Slightly Included Included

