



**ELECTRONIC COPY**

LG789642100  
Report verification at igi.org



April 14, 2026

IGI Report Number **LG789642100**

Description **LABORATORY GROWN DIAMOND**

Shape and Cutting Style **HALF MOON BRILLIANT**

Measurements **9.98 X 6.51 X 4.41 MM**

**GRADING RESULTS**

Carat Weight **2.01 CARATS**

Color Grade **E**

Clarity Grade **VVS 2**

April 14, 2026

IGI Report Number **LG789642100**

Description **LABORATORY GROWN DIAMOND**

Shape and Cutting Style **HALF MOON BRILLIANT**

Measurements **9.98 X 6.51 X 4.41 MM**

**GRADING RESULTS**

Carat Weight **2.01 CARATS**

Color Grade **E**

Clarity Grade **VVS 2**

**ADDITIONAL GRADING INFORMATION**

Polish **EXCELLENT**

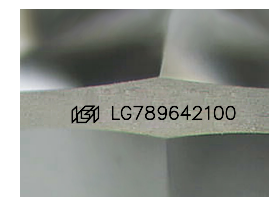
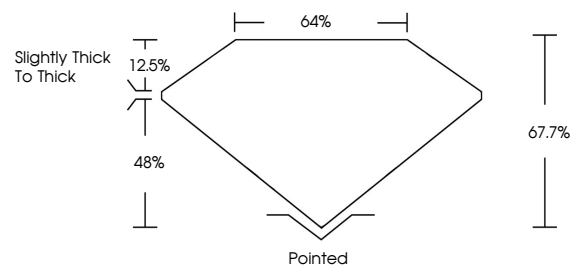
Symmetry **EXCELLENT**

Fluorescence **NONE**

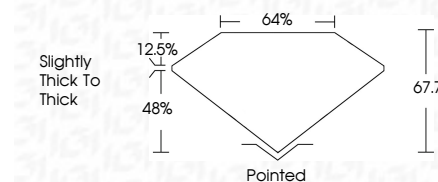
Inscription(s) **IGI LG789642100**

Comments: This Laboratory Grown Diamond was created by Chemical Vapor Deposition (CVD) growth process. Type IIa

**PROPORTIONS**



Sample Image Used



**COLOR**

D E F G H I J Faint Very Light Light

**CLARITY**

FL	IF	VVS <sup>1-2</sup>	VS <sup>1-2</sup>	SI <sup>1-2</sup>	I <sup>1-3</sup>
Flawless	Internally Flawless	Very Very Slightly Included	Very Slightly Included	Slightly Included	Included

**ADDITIONAL GRADING INFORMATION**

Polish **EXCELLENT**

Symmetry **EXCELLENT**

Fluorescence **NONE**

Inscription(s) **IGI LG789642100**

Comments: This Laboratory Grown Diamond was created by Chemical Vapor Deposition (CVD) growth process. Type IIa



**IGI**



April 14, 2026  
IGI Report No LG789642100  
**HALF MOON BRILLIANT**

9.98 X 6.51 X 4.41 MM

Carat Weight **2.01 CARATS**

Color Grade **E**

Clarity Grade **VVS 2**

Depth **67.7%**

Table **64%**

Girdle **Slightly Thick To Thick**

Culet **Pointed**

Polish **EXCELLENT**

Symmetry **EXCELLENT**

Fluorescence **NONE**

Inscription(s) **IGI LG789642100**

Comments: This Laboratory Grown Diamond was created by Chemical Vapor Deposition (CVD) growth process. Type IIa