



ELECTRONIC COPY

LG789640487
Report verification at igi.org

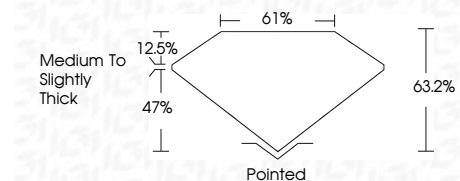


April 10, 2026
IGI Report Number **LG789640487**
Description **LABORATORY GROWN DIAMOND**
Shape and Cutting Style **CUT CORNERED
RECTANGULAR MODIFIED
BRILLIANT**

Measurements **11.78 X 8.28 X 5.23 MM**

GRADING RESULTS

Carat Weight **4.44 CARATS**
Color Grade **D**
Clarity Grade **VVS 2**



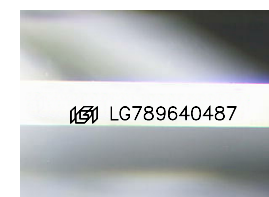
ADDITIONAL GRADING INFORMATION

Polish **EXCELLENT**
Symmetry **EXCELLENT**
Fluorescence **NONE**
Inscription(s) **(IGI) LG789640487**
Comments: This Laboratory Grown Diamond was created by Chemical Vapor Deposition (CVD) growth process. Type IIa



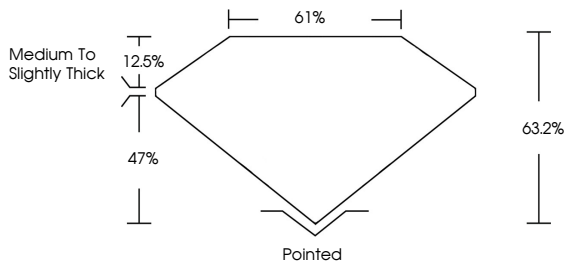
April 10, 2026
IGI Report No **LG789640487**
CUT CORNERED RECT. MODIFIED BRILLIANT
4.44 CARATS
D
VVS 2
63.2%
61%
Medium to Slightly Thick
Pointed
EXCELLENT
EXCELLENT
NONE
(IGI) LG789640487

Comments: This Laboratory Grown Diamond was created by Chemical Vapor Deposition (CVD) growth process. Type IIa

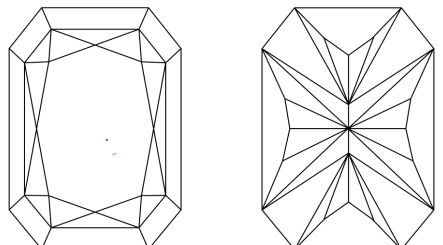


Sample Image Used

PROPORTIONS



CLARITY CHARACTERISTICS



KEY TO SYMBOLS

Red symbols indicate internal characteristics.
Green symbols indicate external characteristics.

COLOR

D E F G H I J Faint Very Light Light

CLARITY

FL	IF	VVS ¹⁻²	VS ¹⁻²	SI ¹⁻²	I ¹⁻³
Flawless	Internally Flawless	Very Very Slightly Included	Very Slightly Included	Slightly Included	Included

