



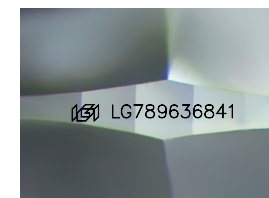
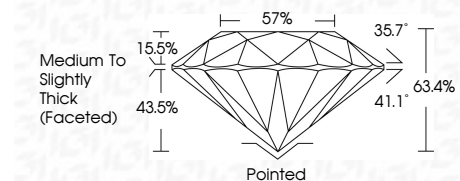
ELECTRONIC COPY

LG789636841 Report verification at igi.org



April 13, 2026 IGI Report Number LG789636841 Description LABORATORY GROWN DIAMOND Shape and Cutting Style ROUND BRILLIANT Measurements 7.35 - 7.39 X 4.67 MM

GRADING RESULTS Carat Weight 1.57 CARAT Color Grade E Clarity Grade VS 1 Cut Grade EXCELLENT



Sample Image Used

ADDITIONAL GRADING INFORMATION Polish EXCELLENT Symmetry EXCELLENT Fluorescence NONE Inscription(s) LG789636841 Comments: This Laboratory Grown Diamond was created by Chemical Vapor Deposition (CVD) growth process. Type IIa



April 13, 2026 IGI Report No LG789636841 ROUND BRILLIANT 7.35 - 7.39 X 4.67 MM 1.57 CARAT E VS 1 EXCELLENT 63.4% 57% Medium To Slightly Thick (Faceted) Pointed EXCELLENT EXCELLENT NONE NONE LG789636841

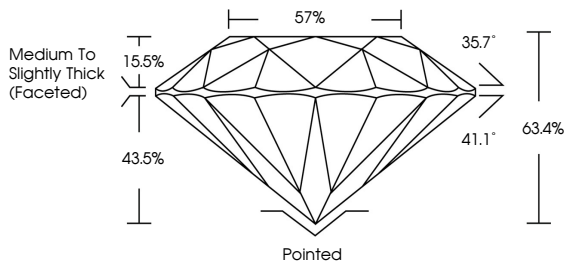
April 13, 2026 IGI Report Number LG789636841 Description LABORATORY GROWN DIAMOND Shape and Cutting Style ROUND BRILLIANT Measurements 7.35 - 7.39 X 4.67 MM

GRADING RESULTS Carat Weight 1.57 CARAT Color Grade E Clarity Grade VS 1 Cut Grade EXCELLENT

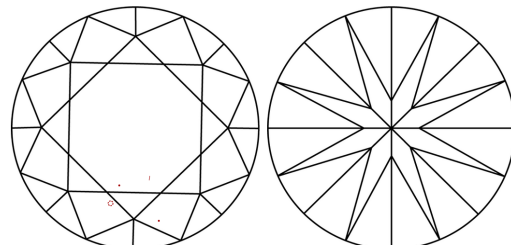
ADDITIONAL GRADING INFORMATION Polish EXCELLENT Symmetry EXCELLENT Fluorescence NONE Inscription(s) LG789636841

Comments: This Laboratory Grown Diamond was created by Chemical Vapor Deposition (CVD) growth process. Type IIa

PROPORTIONS



CLARITY CHARACTERISTICS



KEY TO SYMBOLS Red symbols indicate internal characteristics. Green symbols indicate external characteristics.

Table with columns D, E, F, G, H, I, J, Faint, Very Light, Light

Table with columns FL, IF, VS 1-2, VS 1-2, SI 1-2, I 1-3

