



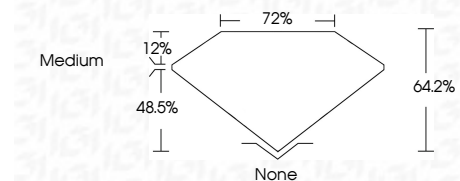
**ELECTRONIC COPY**

LG789635653  
Report verification at igi.org



April 9, 2026  
IGI Report Number **LG789635653**  
Description **LABORATORY GROWN DIAMOND**  
Shape and Cutting Style **MODIFIED KITE STEP CUT**  
Measurements **10.80 X 7.18 X 4.61 MM**

**GRADING RESULTS**  
Carat Weight **2.03 CARATS**  
Color Grade **D**  
Clarity Grade **VVS 2**



**ADDITIONAL GRADING INFORMATION**  
Polish **EXCELLENT**  
Symmetry **EXCELLENT**  
Fluorescence **NONE**  
Inscription(s) **IGI LG789635653**  
Comments: This Laboratory Grown Diamond was created by Chemical Vapor Deposition (CVD) growth process. Type IIa



April 9, 2026  
IGI Report No. **LG789635653**  
**MODIFIED KITE STEP CUT**  
10.80 X 7.18 X 4.61 MM  
2.03 CARATS  
D  
2.03 CARATS  
D  
VVS 2  
48.5%  
72%  
Medium  
None  
EXCELLENT  
EXCELLENT  
NONE  
IGI LG789635653  
Comments: This Laboratory Grown Diamond was created by Chemical Vapor Deposition (CVD) growth process. Type IIa

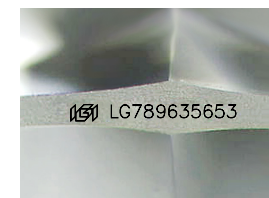
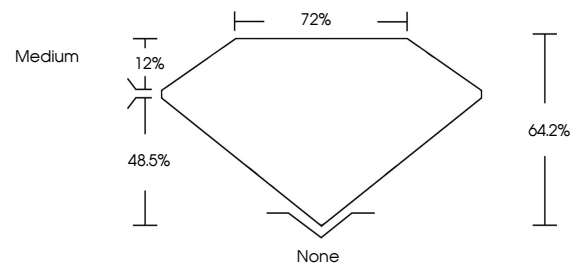
April 9, 2026  
IGI Report Number **LG789635653**  
Description **LABORATORY GROWN DIAMOND**  
Shape and Cutting Style **MODIFIED KITE STEP CUT**  
Measurements **10.80 X 7.18 X 4.61 MM**

**GRADING RESULTS**  
Carat Weight **2.03 CARATS**  
Color Grade **D**  
Clarity Grade **VVS 2**

**ADDITIONAL GRADING INFORMATION**  
Polish **EXCELLENT**  
Symmetry **EXCELLENT**  
Fluorescence **NONE**  
Inscription(s) **IGI LG789635653**

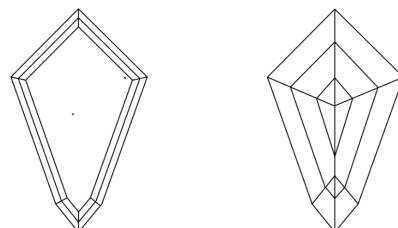
Comments: This Laboratory Grown Diamond was created by Chemical Vapor Deposition (CVD) growth process. Type IIa

**PROPORTIONS**



Sample Image Used

**CLARITY CHARACTERISTICS**



**KEY TO SYMBOLS**

Red symbols indicate internal characteristics.  
Green symbols indicate external characteristics.

**COLOR**

D E F G H I J Faint Very Light Light

**CLARITY**

FL	IF	VVS <sup>1-2</sup>	VS <sup>1-2</sup>	SI <sup>1-2</sup>	I <sup>1-3</sup>
Flawless	Internally Flawless	Very Very Slightly Included	Very Slightly Included	Slightly Included	Included

