



ELECTRONIC COPY

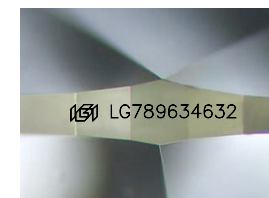
LG789634632
Report verification at igi.org



April 11, 2026
IGI Report Number **LG789634632**
Description **LABORATORY GROWN DIAMOND**

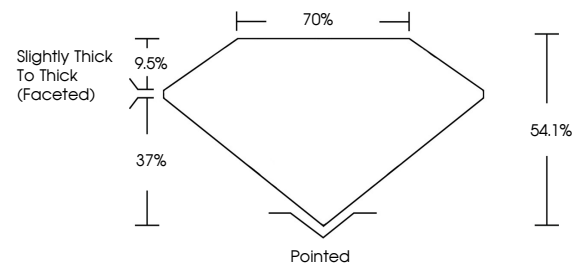
Shape and Cutting Style **PEAR MODIFIED BRILLIANT**
Measurements **8.84 X 5.60 X 3.03 MM**

GRADING RESULTS
Carat Weight **1.06 CARAT**
Color Grade **FANCY INTENSE PINK**
Clarity Grade **VS 2**

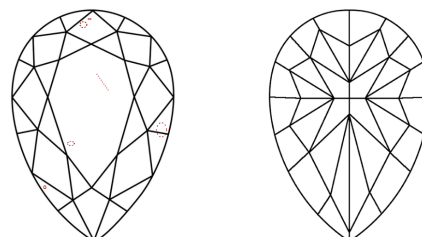


Sample Image Used

PROPORTIONS



CLARITY CHARACTERISTICS



KEY TO SYMBOLS

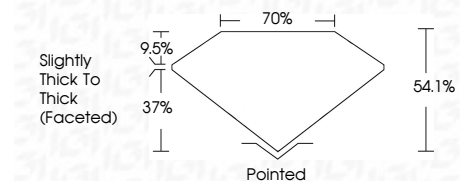
Red symbols indicate internal characteristics.
Green symbols indicate external characteristics.

COLOR

D E F G H I J Faint Very Light Light

CLARITY

FL	IF	VS ¹⁻²	VS ¹⁻²	SI ¹⁻²	I ¹⁻³
Flawless	Internally Flawless	Very Very Slightly Included	Very Slightly Included	Slightly Included	Included



ADDITIONAL GRADING INFORMATION

Polish **VERY GOOD**
Symmetry **VERY GOOD**
Fluorescence **STRONG**

Inscription(s) **IGI LG789634632**
Comments: This Laboratory Grown Diamond was created by Chemical Vapor Deposition (CVD) growth process. Indications of post-growth treatment.



April 11, 2026
IGI Report No **LG789634632**
PEAR MODIFIED BRILLIANT
8.84 X 5.60 X 3.03 MM
Carat Weight **1.06 CARAT**
Color Grade **FANCY INTENSE PINK**
Clarity Grade **VS 2**
Depth **9.5%**
Table **70%**
Girdle **Slightly Thick To Thick (Faceted)**
Culet **Pointed**
Polish **VERY GOOD**
Symmetry **VERY GOOD**
Fluorescence **STRONG**
Inscription(s) **IGI LG789634632**
Comments: This Laboratory Grown Diamond was created by Chemical Vapor Deposition (CVD) growth process. Indications of post-growth treatment.