



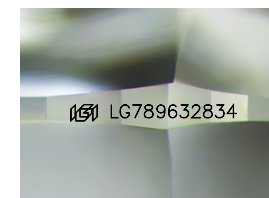
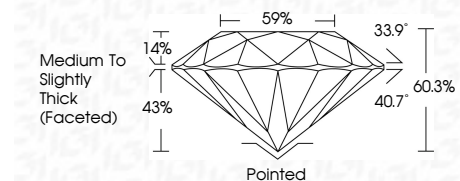
ELECTRONIC COPY

LG789632834 Report verification at igi.org



April 6, 2026 IGI Report Number LG789632834 Description LABORATORY GROWN DIAMOND Shape and Cutting Style ROUND BRILLIANT Measurements 6.64 - 6.70 X 4.03 MM

GRADING RESULTS Carat Weight 1.09 CARAT Color Grade E Clarity Grade VS 2 Cut Grade IDEAL



Sample Image Used

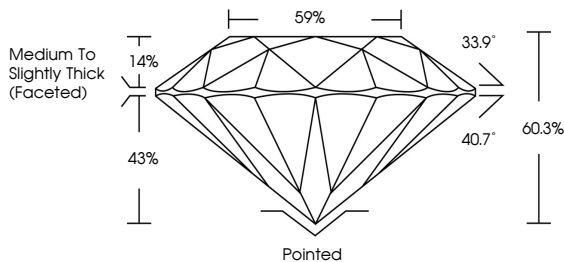
ADDITIONAL GRADING INFORMATION Polish EXCELLENT Symmetry EXCELLENT Fluorescence NONE Inscription(s) LG789632834 Comments: This Laboratory Grown Diamond was created by Chemical Vapor Deposition (CVD) growth process. Type IIa



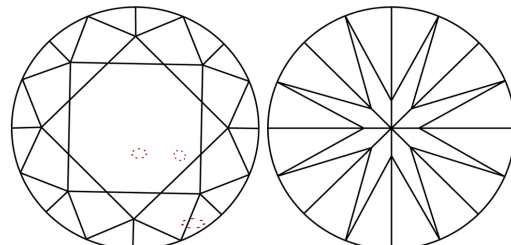
April 6, 2026 IGI Report No LG789632834 ROUND BRILLIANT 6.64 - 6.70 X 4.03 MM 1.09 CARAT E VS 2 IDEAL 60.3% 59% Medium To Slightly Thick (Faceted) Pointed EXCELLENT EXCELLENT NONE LG789632834

April 6, 2026 IGI Report Number LG789632834 Description LABORATORY GROWN DIAMOND Shape and Cutting Style ROUND BRILLIANT Measurements 6.64 - 6.70 X 4.03 MM GRADING RESULTS Carat Weight 1.09 CARAT Color Grade E Clarity Grade VS 2 Cut Grade IDEAL ADDITIONAL GRADING INFORMATION Polish EXCELLENT Symmetry EXCELLENT Fluorescence NONE Inscription(s) LG789632834

PROPORTIONS



CLARITY CHARACTERISTICS



KEY TO SYMBOLS Red symbols indicate internal characteristics. Green symbols indicate external characteristics.

COLOR

Table with color scale: D, E, F, G, H, I, J, Faint, Very Light, Light

CLARITY

Table with clarity scale: FL, IF, VS 1-2, VS 1-2, SI 1-2, I 1-3, Flawless, Internally Flawless, Very Very Slightly Included, Very Slightly Included, Slightly Included, Included



Comments: This Laboratory Grown Diamond was created by Chemical Vapor Deposition (CVD) growth process. Type IIa