



ELECTRONIC COPY

LABORATORY GROWN DIAMOND REPORT

April 9, 2026
IGI Report Number LG789631139
Description LABORATORY GROWN DIAMOND
Shape and Cutting Style CUT CORNERED RECTANGULAR MODIFIED BRILLIANT
Measurements 10.98 X 7.87 X 5.43 MM

GRADING RESULTS

Carat Weight 4.19 CARATS
Color Grade D
Clarity Grade VVS 2

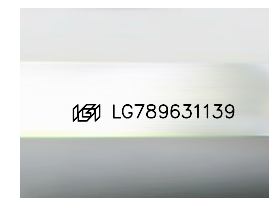
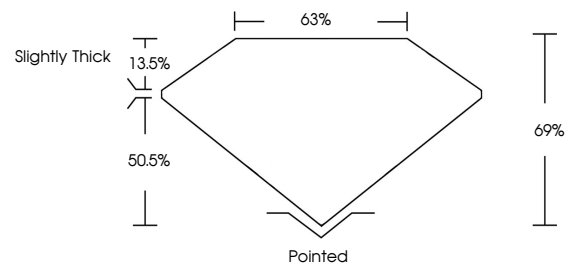
ADDITIONAL GRADING INFORMATION

Polish EXCELLENT
Symmetry EXCELLENT
Fluorescence NONE

Inscription(s) LG789631139

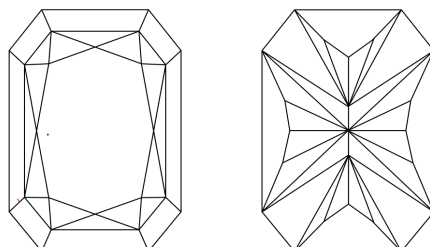
Comments: This Laboratory Grown Diamond was created by Chemical Vapor Deposition (CVD) growth process.
Type IIa

PROPORTIONS



Sample Image Used

CLARITY CHARACTERISTICS



KEY TO SYMBOLS

Red symbols indicate internal characteristics.
Green symbols indicate external characteristics.

COLOR

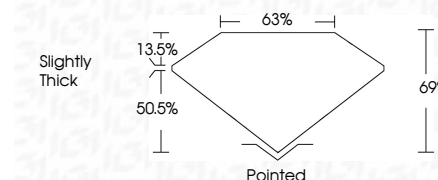
D E F G H I J Faint Very Light Light

CLARITY

FL IF VVS¹⁻² VS¹⁻² SI¹⁻² I¹⁻³
Flawless Internally Flawless Very Very Slightly Included Very Slightly Included Slightly Included Included



April 9, 2026
IGI Report Number LG789631139
Description LABORATORY GROWN DIAMOND
Shape and Cutting Style CUT CORNERED RECTANGULAR MODIFIED BRILLIANT
Measurements 10.98 X 7.87 X 5.43 MM
GRADING RESULTS
Carat Weight 4.19 CARATS
Color Grade D
Clarity Grade VVS 2



ADDITIONAL GRADING INFORMATION

Polish EXCELLENT
Symmetry EXCELLENT
Fluorescence NONE
Inscription(s) LG789631139
Comments: This Laboratory Grown Diamond was created by Chemical Vapor Deposition (CVD) growth process.
Type IIa



April 9, 2026
IGI Report No LG789631139
CUT CORNERED RECT. MODIFIED BRILLIANT
10.98 X 7.87 X 5.43 MM
4.19 CARATS
Color Grade D
Clarity Grade VVS 2
Depth 69%
Table 63%
Girdle Slightly Thick
Culet Pointed
Polish EXCELLENT
Symmetry EXCELLENT
Fluorescence NONE
Inscription(s) LG789631139
Comments: This Laboratory Grown Diamond was created by Chemical Vapor Deposition (CVD) growth process.
Type IIa