



LABORATORY GROWN DIAMOND REPORT

April 8, 2026
 IGI Report Number **LG789630206**
 Description **LABORATORY GROWN DIAMOND**
 Shape and Cutting Style **HEART BRILLIANT**
 Measurements **4.75 X 5.40 X 2.79 MM**

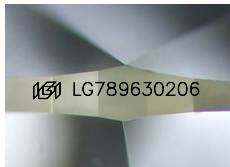
GRADING RESULTS

Carat Weight **0.50 CARAT**
 Color Grade **FANCY YELLOW**
 Clarity Grade **VVS 2**

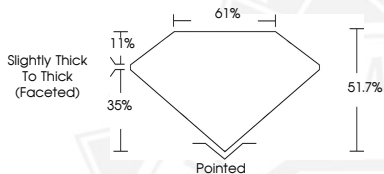
ADDITIONAL GRADING INFORMATION

Polish **VERY GOOD**
 Symmetry **GOOD**
 Fluorescence **NONE**
 Inscription(s) **IGI LG789630206**

Comments: This Laboratory Grown Diamond was created by Chemical Vapor Deposition (CVD) growth process.



Sample Image Used



April 8, 2026
 IGI Report Number **LG789630206**
HEART BRILLIANT
LABORATORY GROWN DIAMOND
4.75 X 5.40 X 2.79 MM
 Carat Weight **0.50 CARAT**
 Color Grade **FANCY YELLOW**
 Clarity Grade **VVS 2**
 Polish **VERY GOOD**
 Symmetry **GOOD**
 Fluorescence **NONE**
 Inscription(s) **IGI LG789630206**

Comments: This Laboratory Grown Diamond was created by Chemical Vapor Deposition (CVD) growth process.



April 8, 2026
 IGI Report Number **LG789630206**
HEART BRILLIANT
LABORATORY GROWN DIAMOND
4.75 X 5.40 X 2.79 MM
 Carat Weight **0.50 CARAT**
 Color Grade **FANCY YELLOW**
 Clarity Grade **VVS 2**
 Polish **VERY GOOD**
 Symmetry **GOOD**
 Fluorescence **NONE**
 Inscription(s) **IGI LG789630206**

Comments: This Laboratory Grown Diamond was created by Chemical Vapor Deposition (CVD) growth process.



THIS DOCUMENT WAS PRODUCED WITH THE FOLLOWING SECURITY MEASURES: SPECIAL DOCUMENT PAPER, INK SCREENS, WATERMARK, BACKGROUND DESIGNS, HOLOGRAM AND OTHER SECURITY FEATURES NOT LISTED AND DO EXCEED DOCUMENT SECURITY INDUSTRY GUIDELINES.