



**ELECTRONIC COPY**

LG789630090  
Report verification at igi.org



April 9, 2026

IGI Report Number **LG789630090**

Description **LABORATORY GROWN DIAMOND**

Shape and Cutting Style **CUT CORNERED  
RECTANGULAR MODIFIED  
BRILLIANT**

Measurements **7.37 X 5.66 X 3.86 MM**

**GRADING RESULTS**

Carat Weight **1.52 CARAT**

Color Grade **FANCY YELLOW**

Clarity Grade **VVS 2**

April 9, 2026

IGI Report Number **LG789630090**

Description **LABORATORY GROWN DIAMOND**

Shape and Cutting Style **CUT CORNERED RECTANGULAR  
MODIFIED BRILLIANT**

Measurements **7.37 X 5.66 X 3.86 MM**

**GRADING RESULTS**

Carat Weight **1.52 CARAT**

Color Grade **FANCY YELLOW**

Clarity Grade **VVS 2**

**ADDITIONAL GRADING INFORMATION**

Polish **VERY GOOD**

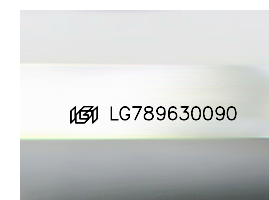
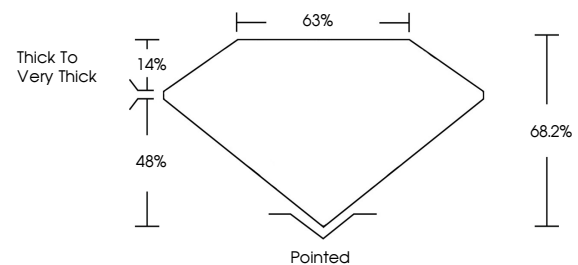
Symmetry **EXCELLENT**

Fluorescence **NONE**

Inscription(s) **IGI LG789630090**

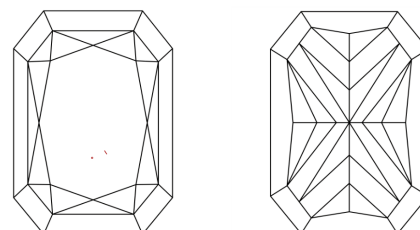
Comments: This Laboratory Grown Diamond was created by Chemical Vapor Deposition (CVD) growth process.

**PROPORTIONS**



Sample Image Used

**CLARITY CHARACTERISTICS**



**KEY TO SYMBOLS**

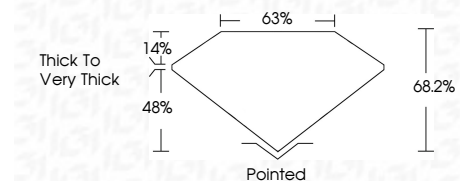
Red symbols indicate internal characteristics.  
Green symbols indicate external characteristics.

**COLOR**

D E F G H I J Faint Very Light Light

**CLARITY**

FL	IF	VVS <sup>1-2</sup>	VS <sup>1-2</sup>	SI <sup>1-2</sup>	I <sup>1-3</sup>
Flawless	Internally Flawless	Very Very Slightly Included	Very Slightly Included	Slightly Included	Included



**ADDITIONAL GRADING INFORMATION**

Polish **VERY GOOD**

Symmetry **EXCELLENT**

Fluorescence **NONE**

Inscription(s) **IGI LG789630090**

Comments: This Laboratory Grown Diamond was created by Chemical Vapor Deposition (CVD) growth process.



April 9, 2026  
IGI Report No LG789630090  
CUT CORNERED RECT. MODIFIED BRILLIANT  
7.37 X 5.66 X 3.86 MM  
1.52 CARAT  
FANCY YELLOW  
VVS 2  
68.2%  
63%  
Thick to Very Thick  
Pointed  
VERY GOOD  
EXCELLENT  
NONE  
IGI LG789630090  
Comments: This Laboratory Grown Diamond was created by Chemical Vapor Deposition (CVD) growth process.