



ELECTRONIC COPY

LG789627642
Report verification at igi.org



April 10, 2026

IGI Report Number **LG789627642**

Description **LABORATORY GROWN DIAMOND**

Shape and Cutting Style **HEART BRILLIANT**

Measurements **5.99 X 6.39 X 4.28 MM**

GRADING RESULTS

Carat Weight **1.00 CARAT**

Color Grade **FANCY PINK**

Clarity Grade **VS 1**

April 10, 2026

IGI Report Number **LG789627642**

Description **LABORATORY GROWN DIAMOND**

Shape and Cutting Style **HEART BRILLIANT**

Measurements **5.99 X 6.39 X 4.28 MM**

GRADING RESULTS

Carat Weight **1.00 CARAT**

Color Grade **FANCY PINK**

Clarity Grade **VS 1**

ADDITIONAL GRADING INFORMATION

Polish **EXCELLENT**

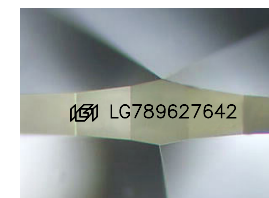
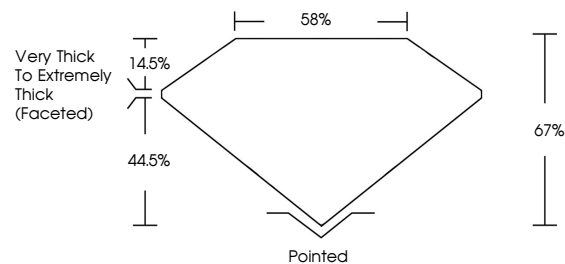
Symmetry **EXCELLENT**

Fluorescence **STRONG**

Inscription(s) **IGI LG789627642**

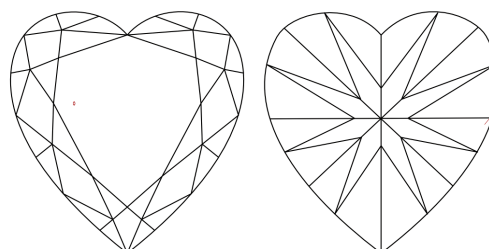
Comments: This Laboratory Grown Diamond was created by Chemical Vapor Deposition (CVD) growth process. Indications of post-growth treatment.

PROPORTIONS



Sample Image Used

CLARITY CHARACTERISTICS



KEY TO SYMBOLS

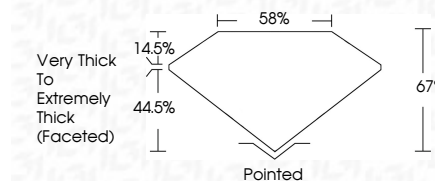
Red symbols indicate internal characteristics.
Green symbols indicate external characteristics.

COLOR

D E F G H I J Faint Very Light Light

CLARITY

FL	IF	VS ¹⁻²	VS ¹⁻²	SI ¹⁻²	I ¹⁻³
Flawless	Internally Flawless	Very Very Slightly Included	Very Slightly Included	Slightly Included	Included



ADDITIONAL GRADING INFORMATION

Polish **EXCELLENT**

Symmetry **EXCELLENT**

Fluorescence **STRONG**

Inscription(s) **IGI LG789627642**

Comments: This Laboratory Grown Diamond was created by Chemical Vapor Deposition (CVD) growth process. Indications of post-growth treatment.



IGI



April 10, 2026
IGI Report No LG789627642
HEART BRILLIANT

1.00 CARAT
FANCY PINK

5.99 X 6.39 X 4.28 MM

Color Grade
Clarity Grade
Depth
Table
Girdle

VS 1
67%
85%

Very Thick to Extremely Thick (Faceted)

Pointed
EXCELLENT
EXCELLENT
STRONG

IGI LG789627642

Comments: This Laboratory Grown Diamond was created by Chemical Vapor Deposition (CVD) growth process. Indications of post-growth treatment.