



**ELECTRONIC COPY**

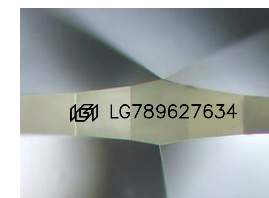
LG789627634  
Report verification at [igi.org](http://igi.org)



April 11, 2026  
IGI Report Number **LG789627634**  
Description **LABORATORY GROWN DIAMOND**

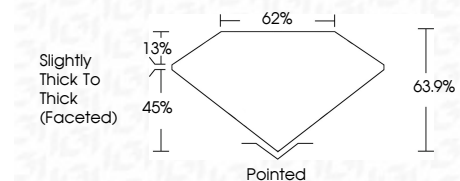
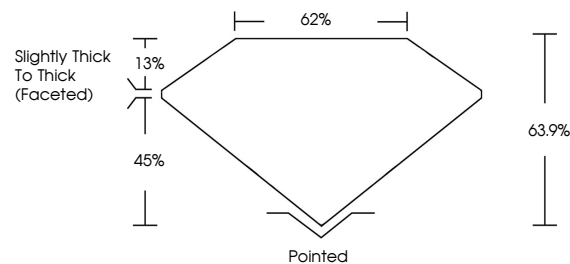
Shape and Cutting Style **PEAR MODIFIED BRILLIANT**  
Measurements **14.30 X 8.94 X 5.71 MM**

**GRADING RESULTS**  
Carat Weight **5.09 CARATS**  
Color Grade **FANCY INTENSE YELLOW**  
Clarity Grade **VS 1**

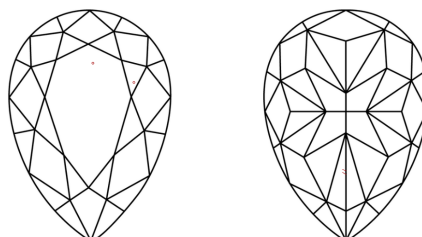


Sample Image Used

**PROPORTIONS**



**CLARITY CHARACTERISTICS**



**KEY TO SYMBOLS**

Red symbols indicate internal characteristics.  
Green symbols indicate external characteristics.

**COLOR**

D E F G H I J Faint Very Light Light

**CLARITY**

FL	IF	VS <sup>1-2</sup>	VS <sup>1-2</sup>	SI <sup>1-2</sup>	I <sup>1-3</sup>
Flawless	Internally Flawless	Very Very Slightly Included	Very Slightly Included	Slightly Included	Included

**ADDITIONAL GRADING INFORMATION**

Polish **EXCELLENT**  
Symmetry **EXCELLENT**  
Fluorescence **NONE**  
Inscription(s) **IGI LG789627634**  
Comments: This Laboratory Grown Diamond was created by Chemical Vapor Deposition (CVD) growth process.



**IGI**



April 11, 2026  
IGI Report No **LG789627634**  
**PEAR MODIFIED BRILLIANT**  
14.30 X 8.94 X 5.71 MM  
5.09 CARATS  
FANCY INTENSE YELLOW  
VS 1  
63.9%  
62%  
Slightly Thick To Thick (Faceted)  
Pointed  
EXCELLENT  
EXCELLENT  
NONE  
IGI LG789627634  
Comments: This Laboratory Grown Diamond was created by Chemical Vapor Deposition (CVD) growth process.