



ELECTRONIC COPY

LG789627468
Report verification at igi.org



April 11, 2026

IGI Report Number **LG789627468**

Description **LABORATORY GROWN DIAMOND**

Shape and Cutting Style **ROUND BRILLIANT**

Measurements **7.91 - 7.96 X 4.93 MM**

GRADING RESULTS

Carat Weight **1.91 CARAT**

Color Grade **D**

Clarity Grade **VVS 2**

Cut Grade **IDEAL**

April 11, 2026

IGI Report Number **LG789627468**

Description **LABORATORY GROWN DIAMOND**

Shape and Cutting Style **ROUND BRILLIANT**

Measurements **7.91 - 7.96 X 4.93 MM**

GRADING RESULTS

Carat Weight **1.91 CARAT**

Color Grade **D**

Clarity Grade **VVS 2**

Cut Grade **IDEAL**

ADDITIONAL GRADING INFORMATION

Polish **EXCELLENT**

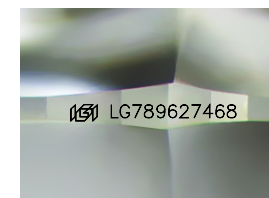
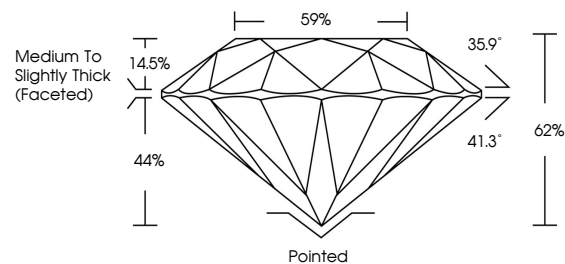
Symmetry **EXCELLENT**

Fluorescence **NONE**

Inscription(s) **IGI LG789627468**

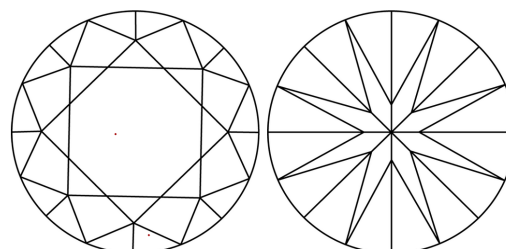
Comments: This Laboratory Grown Diamond was created by Chemical Vapor Deposition (CVD) growth process. Type IIa

PROPORTIONS



Sample Image Used

CLARITY CHARACTERISTICS



KEY TO SYMBOLS

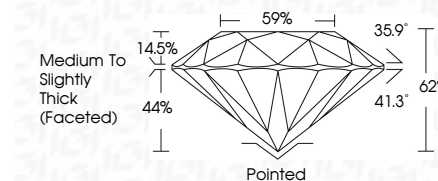
Red symbols indicate internal characteristics.
Green symbols indicate external characteristics.

COLOR

D E F G H I J Faint Very Light Light

CLARITY

| FL | IF | VVS ¹⁻² | VS ¹⁻² | SI ¹⁻² | I ¹⁻³ |
|----------|---------------------|-----------------------------|------------------------|-------------------|------------------|
| Flawless | Internally Flawless | Very Very Slightly Included | Very Slightly Included | Slightly Included | Included |



ADDITIONAL GRADING INFORMATION

Polish **EXCELLENT**

Symmetry **EXCELLENT**

Fluorescence **NONE**

Inscription(s) **IGI LG789627468**

Comments: This Laboratory Grown Diamond was created by Chemical Vapor Deposition (CVD) growth process. Type IIa



IGI



| | | | | | | | | | | | | | | |
|----------------|---------------------------|-----------------|------------|-------|-------|-------|-------|--------|------------------------------------|--------------|----------------|---|------|-----------------|
| April 11, 2026 | IGI Report No LG789627468 | ROUND BRILLIANT | 1.91 CARAT | D | VVS 2 | IDEAL | 62% | 59% | Medium To Slightly Thick (Faceted) | Pointed | EXCELLENT | EXCELLENT | NONE | IGI LG789627468 |
| Carat Weight | Color Grade | Clarity Grade | Cut Grade | Depth | Table | Grade | Culet | Polish | Symmetry | Fluorescence | Inscription(s) | Comments: This Laboratory Grown Diamond was created by Chemical Vapor Deposition (CVD) growth process. Type IIa | | |