



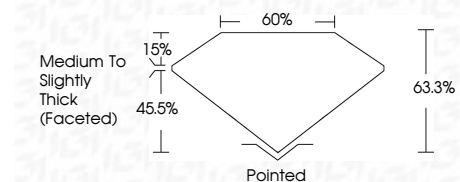
ELECTRONIC COPY

LG789626718
Report verification at igi.org



April 10, 2026
IGI Report Number **LG789626718**
Description **LABORATORY GROWN DIAMOND**
Shape and Cutting Style **OVAL BRILLIANT**
Measurements **9.84 X 6.67 X 4.22 MM**

GRADING RESULTS
Carat Weight **1.70 CARAT**
Color Grade **E**
Clarity Grade **VS 1**



ADDITIONAL GRADING INFORMATION
Polish **EXCELLENT**
Symmetry **EXCELLENT**
Fluorescence **NONE**
Inscription(s) **IGI LG789626718**
Comments: This Laboratory Grown Diamond was created by Chemical Vapor Deposition (CVD) growth process. Type IIa



April 10, 2026
IGI Report No LG789626718
OVAL BRILLIANT
9.84 X 6.67 X 4.22 MM
1.70 CARAT
Color Grade **E**
Clarity Grade **VS 1**
Depth **45.5%**
Table **15%**
Girdle **Medium to Slightly Thick (Faceted)**
Culet **Pointed**
Polish **EXCELLENT**
Symmetry **EXCELLENT**
Fluorescence **NONE**
Inscription(s) **IGI LG789626718**

Comments: This Laboratory Grown Diamond was created by Chemical Vapor Deposition (CVD) growth process. Type IIa

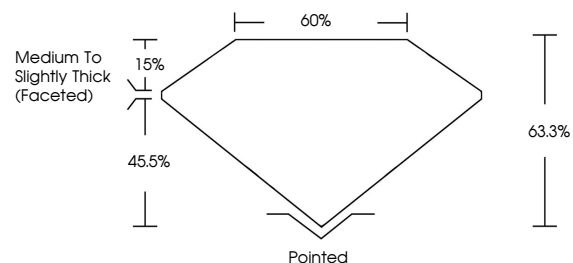
April 10, 2026
IGI Report Number **LG789626718**
Description **LABORATORY GROWN DIAMOND**
Shape and Cutting Style **OVAL BRILLIANT**
Measurements **9.84 X 6.67 X 4.22 MM**

GRADING RESULTS
Carat Weight **1.70 CARAT**
Color Grade **E**
Clarity Grade **VS 1**

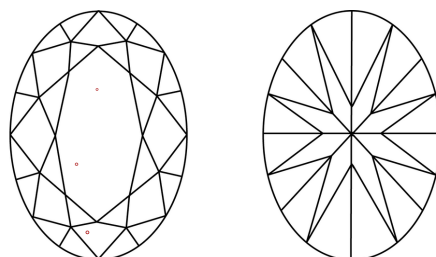
ADDITIONAL GRADING INFORMATION
Polish **EXCELLENT**
Symmetry **EXCELLENT**
Fluorescence **NONE**
Inscription(s) **IGI LG789626718**

Comments: This Laboratory Grown Diamond was created by Chemical Vapor Deposition (CVD) growth process. Type IIa

PROPORTIONS

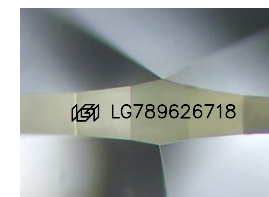


CLARITY CHARACTERISTICS



KEY TO SYMBOLS

Red symbols indicate internal characteristics.
Green symbols indicate external characteristics.



Sample Image Used

COLOR

D E F G H I J Faint Very Light Light

CLARITY

FL	IF	VS ¹⁻²	VS ¹⁻²	SI ¹⁻²	I ¹⁻³
Flawless	Internally Flawless	Very Very Slightly Included	Very Slightly Included	Slightly Included	Included

