



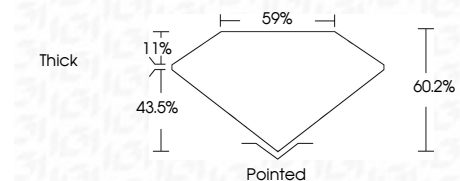
**ELECTRONIC COPY**

LG789625234  
Report verification at igi.org



April 10, 2026  
IGI Report Number **LG789625234**  
Description **LABORATORY GROWN DIAMOND**  
Shape and Cutting Style **SHIELD STEP CUT**  
Measurements **15.16 X 6.54 X 3.94 MM**

**GRADING RESULTS**  
Carat Weight **2.48 CARATS**  
Color Grade **E**  
Clarity Grade **VS 1**



**ADDITIONAL GRADING INFORMATION**  
Polish **EXCELLENT**  
Symmetry **VERY GOOD**  
Fluorescence **NONE**  
Inscription(s) **IGI LG789625234**  
Comments: This Laboratory Grown Diamond was created by Chemical Vapor Deposition (CVD) growth process. Type IIa



April 10, 2026  
IGI Report No LG789625234  
**SHIELD STEP CUT**  
15.16 X 6.54 X 3.94 MM  
2.48 CARATS  
E  
VS 1  
60.2%  
59%  
Thick  
Pointed  
EXCELLENT  
VERY GOOD  
NONE  
IGI LG789625234  
Comments: This Laboratory Grown Diamond was created by Chemical Vapor Deposition (CVD) growth process. Type IIa

**LABORATORY GROWN DIAMOND REPORT**

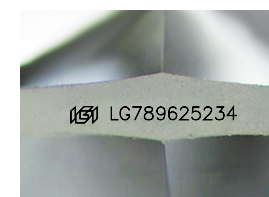
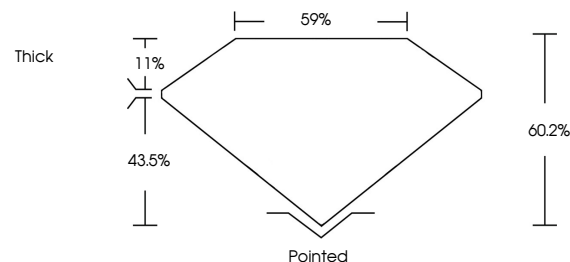
April 10, 2026  
IGI Report Number **LG789625234**  
Description **LABORATORY GROWN DIAMOND**  
Shape and Cutting Style **SHIELD STEP CUT**  
Measurements **15.16 X 6.54 X 3.94 MM**

**GRADING RESULTS**  
Carat Weight **2.48 CARATS**  
Color Grade **E**  
Clarity Grade **VS 1**

**ADDITIONAL GRADING INFORMATION**  
Polish **EXCELLENT**  
Symmetry **VERY GOOD**  
Fluorescence **NONE**  
Inscription(s) **IGI LG789625234**

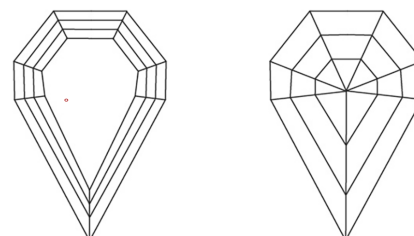
Comments: This Laboratory Grown Diamond was created by Chemical Vapor Deposition (CVD) growth process. Type IIa

**PROPORTIONS**



Sample Image Used

**CLARITY CHARACTERISTICS**



**KEY TO SYMBOLS**

Red symbols indicate internal characteristics.  
Green symbols indicate external characteristics.

**COLOR**

D E F G H I J Faint Very Light Light

**CLARITY**

FL	IF	VS <sup>1-2</sup>	VS <sup>1-2</sup>	SI <sup>1-2</sup>	I <sup>1-3</sup>
Flawless	Internally Flawless	Very Very Slightly Included	Very Slightly Included	Slightly Included	Included

