



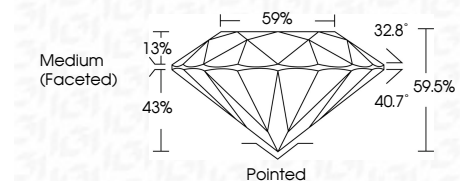
**ELECTRONIC COPY**

LG789624336  
Report verification at igi.org



April 11, 2026  
IGI Report Number **LG789624336**  
Description **LABORATORY GROWN DIAMOND**  
Shape and Cutting Style **ROUND BRILLIANT**  
Measurements **8.19 - 8.22 X 4.88 MM**

**GRADING RESULTS**  
Carat Weight **2.00 CARATS**  
Color Grade **D**  
Clarity Grade **VS 1**  
Cut Grade **IDEAL**



**ADDITIONAL GRADING INFORMATION**  
Polish **EXCELLENT**  
Symmetry **EXCELLENT**  
Fluorescence **NONE**  
Inscription(s) **IGI LG789624336**  
Comments: This Laboratory Grown Diamond was created by Chemical Vapor Deposition (CVD) growth process. Type IIa



April 11, 2026  
IGI Report No LG789624336  
**ROUND BRILLIANT**  
8.19 - 8.22 X 4.88 MM  
2.00 CARATS  
D  
VS 1  
IDEAL  
59.5%  
59%  
Medium (Faceted)  
Pointed  
EXCELLENT  
EXCELLENT  
NONE  
IGI LG789624336  
Comments: This Laboratory Grown Diamond was created by Chemical Vapor Deposition (CVD) growth process. Type IIa

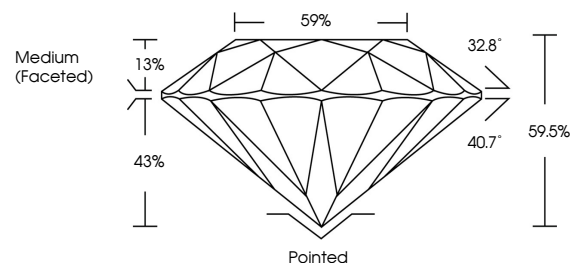
April 11, 2026  
IGI Report Number **LG789624336**  
Description **LABORATORY GROWN DIAMOND**  
Shape and Cutting Style **ROUND BRILLIANT**  
Measurements **8.19 - 8.22 X 4.88 MM**

**GRADING RESULTS**  
Carat Weight **2.00 CARATS**  
Color Grade **D**  
Clarity Grade **VS 1**  
Cut Grade **IDEAL**

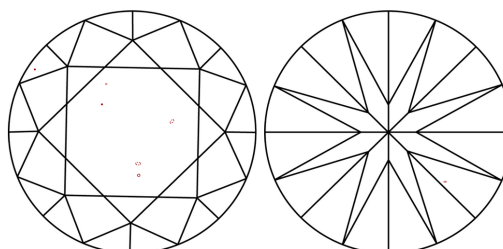
**ADDITIONAL GRADING INFORMATION**  
Polish **EXCELLENT**  
Symmetry **EXCELLENT**  
Fluorescence **NONE**  
Inscription(s) **IGI LG789624336**

Comments: This Laboratory Grown Diamond was created by Chemical Vapor Deposition (CVD) growth process. Type IIa

**PROPORTIONS**

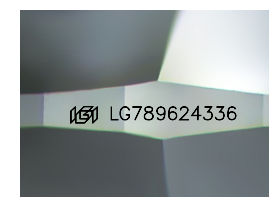


**CLARITY CHARACTERISTICS**



**KEY TO SYMBOLS**

Red symbols indicate internal characteristics.  
Green symbols indicate external characteristics.



Sample Image Used

**COLOR**

D E F G H I J Faint Very Light Light

**CLARITY**

FL	IF	VS <sup>1-2</sup>	VS <sup>1-2</sup>	SI <sup>1-2</sup>	I <sup>1-3</sup>
Flawless	Internally Flawless	Very Very Slightly Included	Very Slightly Included	Slightly Included	Included

