



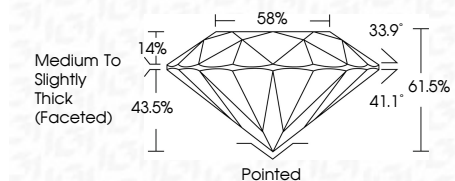
ELECTRONIC COPY

LG789623672
Report verification at igi.org



April 9, 2026
IGI Report Number **LG789623672**
Description **LABORATORY GROWN DIAMOND**
Shape and Cutting Style **ROUND BRILLIANT**
Measurements **6.49 - 6.52 X 4.00 MM**

GRADING RESULTS
Carat Weight **1.04 CARAT**
Color Grade **D**
Clarity Grade **VVS 2**
Cut Grade **IDEAL**

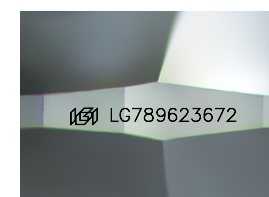
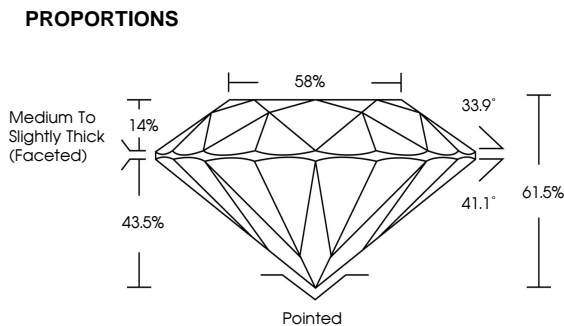


ADDITIONAL GRADING INFORMATION
Polish **EXCELLENT**
Symmetry **EXCELLENT**
Fluorescence **NONE**
Inscription(s) **IGI LG789623672**
Comments: This Laboratory Grown Diamond was created by Chemical Vapor Deposition (CVD) growth process. Type IIa



April 9, 2026
IGI Report No **LG789623672**
ROUND BRILLIANT
6.49 - 6.52 X 4.00 MM
1.04 CARAT
D
VVS 2
IDEAL
61.5%
88%
Medium To Slightly Thick (Faceted)
Pointed
EXCELLENT
EXCELLENT
NONE
IGI LG789623672
Comments: This Laboratory Grown Diamond was created by Chemical Vapor Deposition (CVD) growth process. Type IIa

April 9, 2026
IGI Report Number **LG789623672**
Description **LABORATORY GROWN DIAMOND**
Shape and Cutting Style **ROUND BRILLIANT**
Measurements **6.49 - 6.52 X 4.00 MM**
GRADING RESULTS
Carat Weight **1.04 CARAT**
Color Grade **D**
Clarity Grade **VVS 2**
Cut Grade **IDEAL**



Sample Image Used

COLOR

D	E	F	G	H	I	J	Faint	Very Light	Light
---	---	---	---	---	---	---	-------	------------	-------

CLARITY

FL	IF	VVS ¹⁻²	VS ¹⁻²	SI ¹⁻²	I ¹⁻³
Flawless	Internally Flawless	Very Very Slightly Included	Very Slightly Included	Slightly Included	Included

