



**ELECTRONIC COPY**

LG789623590  
Report verification at [igi.org](http://igi.org)



April 10, 2026

IGI Report Number **LG789623590**

Description **LABORATORY GROWN DIAMOND**

Shape and Cutting Style **EMERALD CUT**

Measurements **9.17 X 6.37 X 4.36 MM**

**GRADING RESULTS**

Carat Weight **2.56 CARATS**

Color Grade **D**

Clarity Grade **VVS 2**

April 10, 2026

IGI Report Number **LG789623590**

Description **LABORATORY GROWN DIAMOND**

Shape and Cutting Style **EMERALD CUT**

Measurements **9.17 X 6.37 X 4.36 MM**

**GRADING RESULTS**

Carat Weight **2.56 CARATS**

Color Grade **D**

Clarity Grade **VVS 2**

**ADDITIONAL GRADING INFORMATION**

Polish **EXCELLENT**

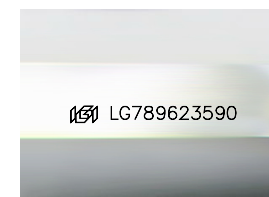
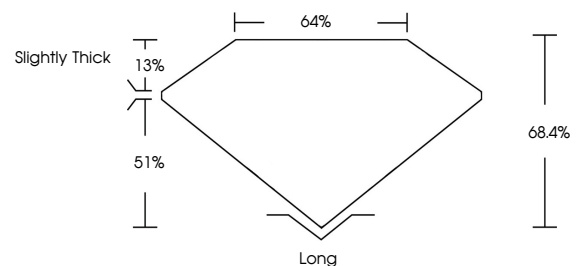
Symmetry **EXCELLENT**

Fluorescence **NONE**

Inscription(s) **IGI LG789623590**

Comments: This Laboratory Grown Diamond was created by Chemical Vapor Deposition (CVD) growth process.  
Type IIa

**PROPORTIONS**



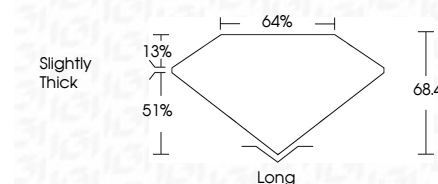
Sample Image Used

**COLOR**

D E F G H I J Faint Very Light Light

**CLARITY**

FL	IF	VVS <sup>1-2</sup>	VS <sup>1-2</sup>	SI <sup>1-2</sup>	I <sup>1-3</sup>
Flawless	Internally Flawless	Very Very Slightly Included	Very Slightly Included	Slightly Included	Included



**ADDITIONAL GRADING INFORMATION**

Polish **EXCELLENT**

Symmetry **EXCELLENT**

Fluorescence **NONE**

Inscription(s) **IGI LG789623590**

Comments: This Laboratory Grown Diamond was created by Chemical Vapor Deposition (CVD) growth process.  
Type IIa



**IGI**



April 10, 2026  
IGI Report No LG789623590  
EMERALD CUT  
9.17 X 6.37 X 4.36 MM  
Carat Weight 2.56 CARATS  
Color Grade D  
Clarity Grade VVS 2  
Table 64%  
Girdle 64%  
Culet Slightly Thick  
Polish EXCELLENT  
Symmetry EXCELLENT  
Fluorescence NONE  
Inscription(s) IGI LG789623590

Comments: This Laboratory Grown Diamond was created by Chemical Vapor Deposition (CVD) growth process.  
Type IIa