



ELECTRONIC COPY

LG789623406
Report verification at igi.org



April 10, 2026

IGI Report Number **LG789623406**

Description **LABORATORY GROWN DIAMOND**

Shape and Cutting Style **KITE STEP CUT**

Measurements **11.40 X 7.38 X 3.92 MM**

GRADING RESULTS

Carat Weight **1.77 CARAT**

Color Grade **D**

Clarity Grade **VS 1**

April 10, 2026

IGI Report Number **LG789623406**

Description **LABORATORY GROWN DIAMOND**

Shape and Cutting Style **KITE STEP CUT**

Measurements **11.40 X 7.38 X 3.92 MM**

GRADING RESULTS

Carat Weight **1.77 CARAT**

Color Grade **D**

Clarity Grade **VS 1**

ADDITIONAL GRADING INFORMATION

Polish **EXCELLENT**

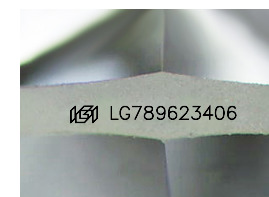
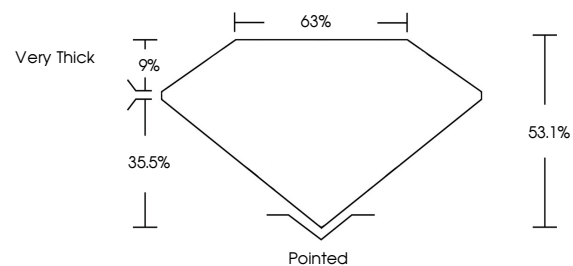
Symmetry **EXCELLENT**

Fluorescence **NONE**

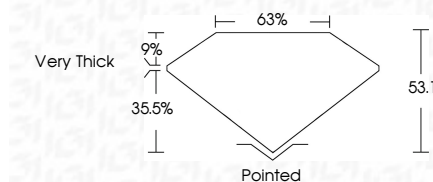
Inscription(s) **IGI LG789623406**

Comments: This Laboratory Grown Diamond was created by Chemical Vapor Deposition (CVD) growth process.
Type IIa

PROPORTIONS



Sample Image Used



COLOR

D E F G H I J Faint Very Light Light

CLARITY

FL	IF	VS ¹⁻²	VS ¹⁻²	SI ¹⁻²	I ¹⁻³
Flawless	Internally Flawless	Very Very Slightly Included	Very Slightly Included	Slightly Included	Included

ADDITIONAL GRADING INFORMATION

Polish **EXCELLENT**

Symmetry **EXCELLENT**

Fluorescence **NONE**

Inscription(s) **IGI LG789623406**

Comments: This Laboratory Grown Diamond was created by Chemical Vapor Deposition (CVD) growth process.
Type IIa



IGI



April 10, 2026
IGI Report No. LG789623406
KITE STEP CUT

11.40 X 7.38 X 3.92 MM

1.77 CARAT
D

VS 1
63.1%
63%

Very Thick

Pointed
EXCELLENT
EXCELLENT
NONE
IGI LG789623406

Culet
Polish
Symmetry
Fluorescence
Inscription(s)

Comments: This Laboratory Grown Diamond was created by Chemical Vapor Deposition (CVD) growth process.
Type IIa