



ELECTRONIC COPY

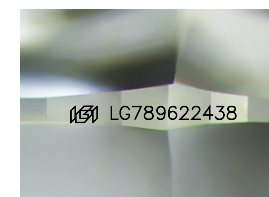
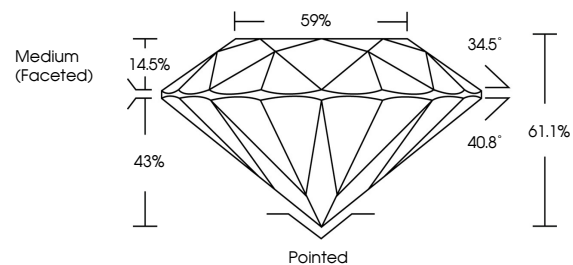
LG789622438
Report verification at igi.org



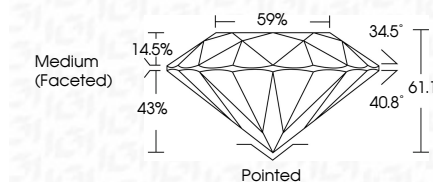
April 9, 2026
IGI Report Number **LG789622438**
Description **LABORATORY GROWN DIAMOND**
Shape and Cutting Style **ROUND BRILLIANT**
Measurements **7.40 - 7.44 X 4.53 MM**
GRADING RESULTS
Carat Weight **1.54 CARAT**
Color Grade **D**
Clarity Grade **VS 1**
Cut Grade **IDEAL**

April 9, 2026
IGI Report Number **LG789622438**
Description **LABORATORY GROWN DIAMOND**
Shape and Cutting Style **ROUND BRILLIANT**
Measurements **7.40 - 7.44 X 4.53 MM**
GRADING RESULTS
Carat Weight **1.54 CARAT**
Color Grade **D**
Clarity Grade **VS 1**
Cut Grade **IDEAL**

PROPORTIONS



Sample Image Used



ADDITIONAL GRADING INFORMATION
Polish **EXCELLENT**
Symmetry **EXCELLENT**
Fluorescence **NONE**
Inscription(s) **IGI LG789622438**

Comments: This Laboratory Grown Diamond was created by Chemical Vapor Deposition (CVD) growth process. Type IIa

COLOR

D E F G H I J Faint Very Light Light

CLARITY

FL	IF	VS ¹⁻²	VS ¹⁻²	SI ¹⁻²	I ¹⁻³
Flawless	Internally Flawless	Very Very Slightly Included	Very Slightly Included	Slightly Included	Included

ADDITIONAL GRADING INFORMATION

Polish **EXCELLENT**
Symmetry **EXCELLENT**
Fluorescence **NONE**
Inscription(s) **IGI LG789622438**
Comments: This Laboratory Grown Diamond was created by Chemical Vapor Deposition (CVD) growth process. Type IIa



IGI



April 9, 2026
IGI Report No **LG789622438**
ROUND BRILLIANT
7.40 - 7.44 X 4.53 MM
Carat Weight **1.54 CARAT**
Color Grade **D**
Clarity Grade **VS 1**
Depth **IDEAL**
Table **61.1%**
Girdle **59%**
Medium (Faceted)
Culet **Pointed**
Polish **EXCELLENT**
Symmetry **EXCELLENT**
Fluorescence **NONE**
Inscriptions(s) **IGI LG789622438**
Comments: This Laboratory Grown Diamond was created by Chemical Vapor Deposition (CVD) growth process. Type IIa