



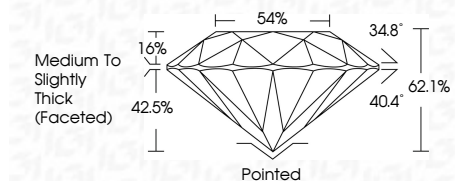
ELECTRONIC COPY

LG789622064 Report verification at igi.org



April 7, 2026 IGI Report Number LG789622064 Description LABORATORY GROWN DIAMOND Shape and Cutting Style ROUND BRILLIANT Measurements 9.19 - 9.22 X 5.72 MM

GRADING RESULTS Carat Weight 3.00 CARATS Color Grade E Clarity Grade VVS 2 Cut Grade IDEAL



ADDITIONAL GRADING INFORMATION Polish EXCELLENT Symmetry EXCELLENT Fluorescence NONE Inscription(s) IGI LG789622064 Comments: This Laboratory Grown Diamond was created by Chemical Vapor Deposition (CVD) growth process. Type IIa



April 7, 2026 IGI Report No LG789622064 ROUND BRILLIANT 9.19 - 9.22 X 5.72 MM 3.00 CARATS E VVS 2 IDEAL 62.1% 54% Medium To Slightly Thick (Faceted) Pointed EXCELLENT EXCELLENT NONE IGI LG789622064 Comments: This Laboratory Grown Diamond was created by Chemical Vapor Deposition (CVD) growth process. Type IIa

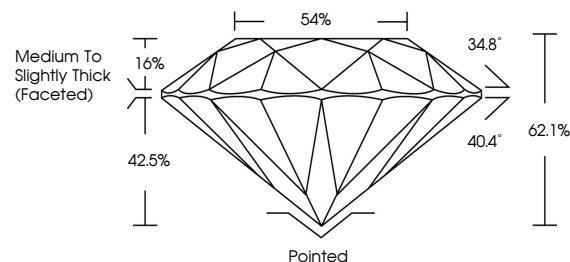
April 7, 2026 IGI Report Number LG789622064 Description LABORATORY GROWN DIAMOND Shape and Cutting Style ROUND BRILLIANT Measurements 9.19 - 9.22 X 5.72 MM

GRADING RESULTS Carat Weight 3.00 CARATS Color Grade E Clarity Grade VVS 2 Cut Grade IDEAL

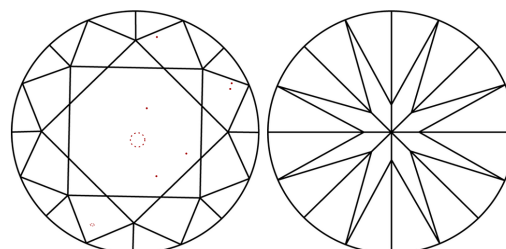
ADDITIONAL GRADING INFORMATION Polish EXCELLENT Symmetry EXCELLENT Fluorescence NONE Inscription(s) IGI LG789622064

Comments: This Laboratory Grown Diamond was created by Chemical Vapor Deposition (CVD) growth process. Type IIa

PROPORTIONS

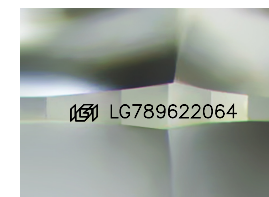


CLARITY CHARACTERISTICS



KEY TO SYMBOLS

Red symbols indicate internal characteristics. Green symbols indicate external characteristics.



Sample Image Used

COLOR

D E F G H I J Faint Very Light Light

CLARITY

FL IF VS 1-2 VS 1-2 SI 1-2 I 1-3 Flawless Internally Flawless Very Very Slightly Included Very Slightly Included Slightly Included Included

