



ELECTRONIC COPY

LG789619931
Report verification at igi.org



April 23, 2026

IGI Report Number **LG789619931**

Description **LABORATORY GROWN DIAMOND**

Shape and Cutting Style **SQUARE EMERALD CUT**

Measurements **6.86 X 6.85 X 4.69 MM**

GRADING RESULTS

Carat Weight **2.01 CARATS**

Color Grade **E**

Clarity Grade **VVS 2**

April 23, 2026

IGI Report Number **LG789619931**

Description **LABORATORY GROWN DIAMOND**

Shape and Cutting Style **SQUARE EMERALD CUT**

Measurements **6.86 X 6.85 X 4.69 MM**

GRADING RESULTS

Carat Weight **2.01 CARATS**

Color Grade **E**

Clarity Grade **VVS 2**

ADDITIONAL GRADING INFORMATION

Polish **EXCELLENT**

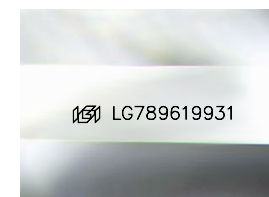
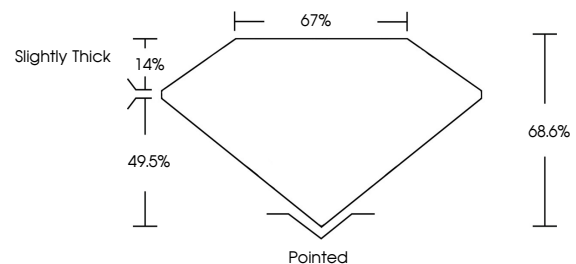
Symmetry **EXCELLENT**

Fluorescence **NONE**

Inscription(s) **IGI LG789619931**

Comments: This Laboratory Grown Diamond was created by Chemical Vapor Deposition (CVD) growth process.
Type IIa

PROPORTIONS



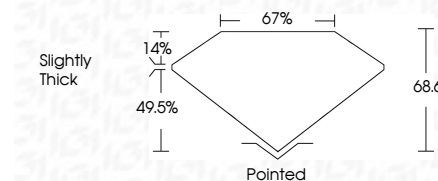
Sample Image Used

COLOR

D E F G H I J Faint Very Light Light

CLARITY

FL	IF	VS ¹⁻²	VS ¹⁻²	SI ¹⁻²	I ¹⁻³
Flawless	Internally Flawless	Very Very Slightly Included	Very Slightly Included	Slightly Included	Included



ADDITIONAL GRADING INFORMATION

Polish **EXCELLENT**

Symmetry **EXCELLENT**

Fluorescence **NONE**

Inscription(s) **IGI LG789619931**

Comments: This Laboratory Grown Diamond was created by Chemical Vapor Deposition (CVD) growth process.
Type IIa



IGI



April 23, 2026
IGI Report No LG789619931
SQUARE EMERALD CUT
6.86 X 6.85 X 4.69 MM
2.01 CARATS
E
VVS 2
68.6%
67%
Slightly Thick
Pointed
EXCELLENT
EXCELLENT
NONE
IGI LG789619931

Comments: This Laboratory Grown Diamond was created by Chemical Vapor Deposition (CVD) growth process.
Type IIa