



**ELECTRONIC COPY**

LG789619927  
Report verification at igi.org



April 23, 2026

IGI Report Number **LG789619927**

Description **LABORATORY GROWN DIAMOND**

Shape and Cutting Style **SQUARE EMERALD CUT**

Measurements **6.43 X 6.39 X 4.18 MM**

**GRADING RESULTS**

Carat Weight **1.56 CARAT**

Color Grade **D**

Clarity Grade **VVS 2**

April 23, 2026

IGI Report Number **LG789619927**

Description **LABORATORY GROWN DIAMOND**

Shape and Cutting Style **SQUARE EMERALD CUT**

Measurements **6.43 X 6.39 X 4.18 MM**

**GRADING RESULTS**

Carat Weight **1.56 CARAT**

Color Grade **D**

Clarity Grade **VVS 2**

**ADDITIONAL GRADING INFORMATION**

Polish **EXCELLENT**

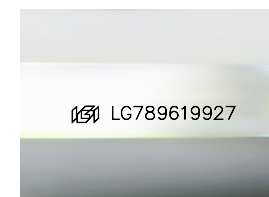
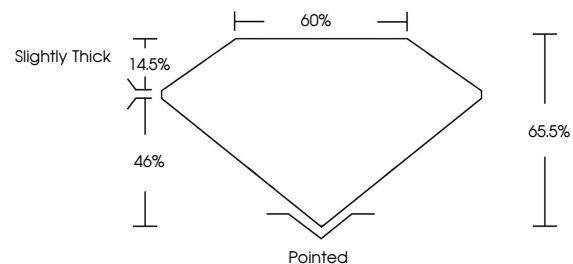
Symmetry **EXCELLENT**

Fluorescence **NONE**

Inscription(s) **IGI LG789619927**

Comments: This Laboratory Grown Diamond was created by Chemical Vapor Deposition (CVD) growth process.  
Type IIa

**PROPORTIONS**



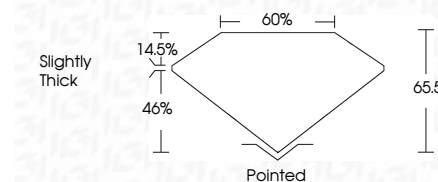
Sample Image Used

**COLOR**

D E F G H I J Faint Very Light Light

**CLARITY**

FL	IF	VVS <sup>1-2</sup>	VS <sup>1-2</sup>	SI <sup>1-2</sup>	I <sup>1-3</sup>
Flawless	Internally Flawless	Very Very Slightly Included	Very Slightly Included	Slightly Included	Included



**ADDITIONAL GRADING INFORMATION**

Polish **EXCELLENT**

Symmetry **EXCELLENT**

Fluorescence **NONE**

Inscription(s) **IGI LG789619927**

Comments: This Laboratory Grown Diamond was created by Chemical Vapor Deposition (CVD) growth process.  
Type IIa



**IGI**



April 23, 2026  
IGI Report No LG789619927  
**SQUARE EMERALD CUT**  
6.43 X 6.39 X 4.18 MM  
1.56 CARAT  
D  
VVS 2  
65.5%  
46%  
Slightly Thick  
Pointed  
EXCELLENT  
EXCELLENT  
NONE  
IGI LG789619927  
Comments: This Laboratory Grown Diamond was created by Chemical Vapor Deposition (CVD) growth process.  
Type IIa