



**ELECTRONIC COPY**

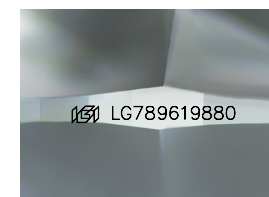
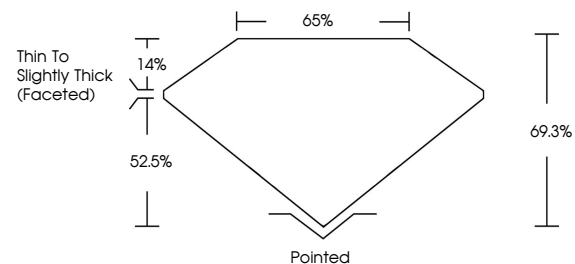
LG789619880  
Report verification at [igi.org](http://igi.org)



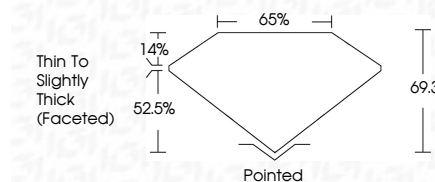
April 23, 2026  
IGI Report Number **LG789619880**  
Description **LABORATORY GROWN DIAMOND**  
Shape and Cutting Style **CUSHION MODIFIED BRILLIANT**  
Measurements **10.60 X 7.07 X 4.90 MM**  
**GRADING RESULTS**  
Carat Weight **3.05 CARATS**  
Color Grade **E**  
Clarity Grade **VS 1**

April 23, 2026  
IGI Report Number **LG789619880**  
Description **LABORATORY GROWN DIAMOND**  
Shape and Cutting Style **CUSHION MODIFIED BRILLIANT**  
Measurements **10.60 X 7.07 X 4.90 MM**  
**GRADING RESULTS**  
Carat Weight **3.05 CARATS**  
Color Grade **E**  
Clarity Grade **VS 1**

**PROPORTIONS**



Sample Image Used



**ADDITIONAL GRADING INFORMATION**  
Polish **EXCELLENT**  
Symmetry **EXCELLENT**  
Fluorescence **NONE**  
Inscription(s) **IGI LG789619880**

Comments: This Laboratory Grown Diamond was created by Chemical Vapor Deposition (CVD) growth process.  
Type IIa

**COLOR**

D E F G H I J Faint Very Light Light

**CLARITY**

FL	IF	VS <sup>1-2</sup>	VS <sup>1-2</sup>	SI <sup>1-2</sup>	I <sup>1-3</sup>
Flawless	Internally Flawless	Very Very Slightly Included	Very Slightly Included	Slightly Included	Included

**ADDITIONAL GRADING INFORMATION**

Polish **EXCELLENT**  
Symmetry **EXCELLENT**  
Fluorescence **NONE**  
Inscription(s) **IGI LG789619880**  
Comments: This Laboratory Grown Diamond was created by Chemical Vapor Deposition (CVD) growth process.  
Type IIa



**IGI**



April 23, 2026  
IGI Report No **LG789619880**  
**CUSHION MODIFIED BRILLIANT**  
**10.60 X 7.07 X 4.90 MM**  
Carat Weight **3.05 CARATS**  
Color Grade **E**  
Clarity Grade **VS 1**  
Depth **69.3%**  
Table **65%**  
Girdle **Thin To Slightly Thick (Faceted)**  
Culet **Pointed**  
Polish **EXCELLENT**  
Symmetry **EXCELLENT**  
Fluorescence **NONE**  
Inscription(s) **IGI LG789619880**  
Comments: This Laboratory Grown Diamond was created by Chemical Vapor Deposition (CVD) growth process.  
Type IIa