



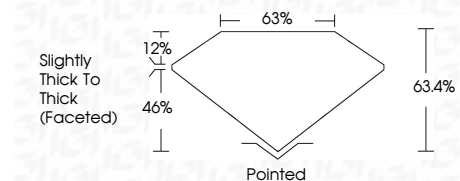
ELECTRONIC COPY

LG789619461 Report verification at igi.org



April 11, 2026 IGI Report Number LG789619461 Description LABORATORY GROWN DIAMOND Shape and Cutting Style SQUARE CUSHION BRILLIANT Measurements 8.35 X 8.26 X 5.24 MM

GRADING RESULTS Carat Weight 2.58 CARATS Color Grade E Clarity Grade VVS 2



ADDITIONAL GRADING INFORMATION Polish EXCELLENT Symmetry EXCELLENT Fluorescence NONE Inscription(s) IGI LG789619461 Comments: This Laboratory Grown Diamond was created by Chemical Vapor Deposition (CVD) growth process. Type IIa



April 11, 2026 IGI Report No LG789619461 SQUARE CUSHION BRILLIANT 8.35 X 8.26 X 5.24 MM 2.58 CARATS E VVS 2 63.4% 63% Slightly Thick To Thick (Faceted) Pointed EXCELLENT EXCELLENT NONE NONE IGI LG789619461 Comments: This Laboratory Grown Diamond was created by Chemical Vapor Deposition (CVD) growth process. Type IIa

LABORATORY GROWN DIAMOND REPORT

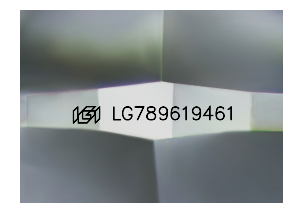
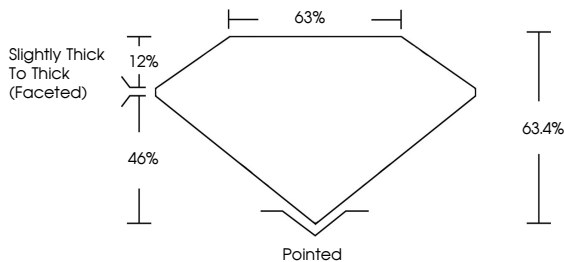
April 11, 2026 IGI Report Number LG789619461 Description LABORATORY GROWN DIAMOND Shape and Cutting Style SQUARE CUSHION BRILLIANT Measurements 8.35 X 8.26 X 5.24 MM

GRADING RESULTS Carat Weight 2.58 CARATS Color Grade E Clarity Grade VVS 2

ADDITIONAL GRADING INFORMATION Polish EXCELLENT Symmetry EXCELLENT Fluorescence NONE Inscription(s) IGI LG789619461

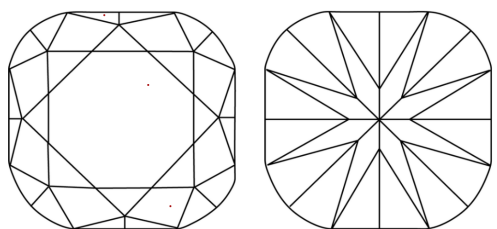
Comments: This Laboratory Grown Diamond was created by Chemical Vapor Deposition (CVD) growth process. Type IIa

PROPORTIONS



Sample Image Used

CLARITY CHARACTERISTICS



KEY TO SYMBOLS Red symbols indicate internal characteristics. Green symbols indicate external characteristics.

COLOR

Color scale table with categories D, E, F, G, H, I, J, Faint, Very Light, Light

CLARITY

Clarity scale table with categories FL, IF, VVS 1-2, VS 1-2, SI 1-2, I 1-3, Flawless, Internally Flawless, Very Very Slightly Included, Very Slightly Included, Slightly Included, Included

