



ELECTRONIC COPY

LG789618407
Report verification at igi.org



April 16, 2026

IGI Report Number **LG789618407**

Description **LABORATORY GROWN DIAMOND**

Shape and Cutting Style **CUT CORNERED
RECTANGULAR MODIFIED
BRILLIANT**

Measurements **9.40 X 6.60 X 4.60 MM**

GRADING RESULTS

Carat Weight **2.65 CARATS**

Color Grade **FANCY INTENSE YELLOW**

Clarity Grade **VS 1**

LABORATORY GROWN DIAMOND REPORT

April 16, 2026

IGI Report Number **LG789618407**

Description **LABORATORY GROWN DIAMOND**

Shape and Cutting Style **CUT CORNERED RECTANGULAR
MODIFIED BRILLIANT**

Measurements **9.40 X 6.60 X 4.60 MM**

GRADING RESULTS

Carat Weight **2.65 CARATS**

Color Grade **FANCY INTENSE YELLOW**

Clarity Grade **VS 1**

ADDITIONAL GRADING INFORMATION

Polish **EXCELLENT**

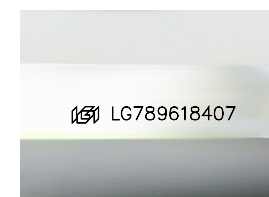
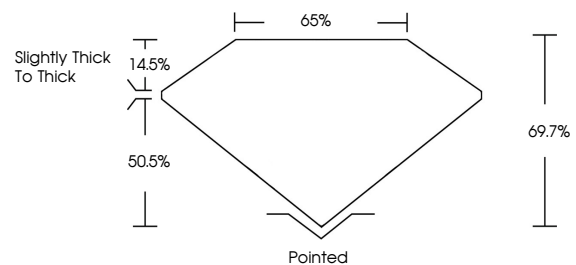
Symmetry **EXCELLENT**

Fluorescence **NONE**

Inscription(s) **IGI LG789618407**

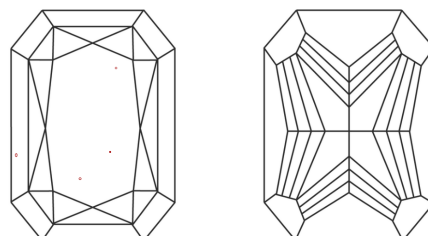
Comments: This Laboratory Grown Diamond was created by Chemical Vapor Deposition (CVD) growth process.

PROPORTIONS



Sample Image Used

CLARITY CHARACTERISTICS



KEY TO SYMBOLS

Red symbols indicate internal characteristics.
Green symbols indicate external characteristics.

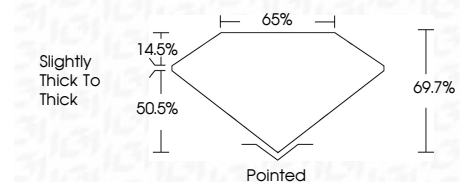
COLOR

D E F G H I J Faint Very Light Light

CLARITY

FL IF VS¹⁻² VS¹⁻² SI¹⁻² I¹⁻³

Flawless Internally Flawless Very Very Slightly Included Very Slightly Included Slightly Included Included



ADDITIONAL GRADING INFORMATION

Polish **EXCELLENT**

Symmetry **EXCELLENT**

Fluorescence **NONE**

Inscription(s) **IGI LG789618407**

Comments: This Laboratory Grown Diamond was created by Chemical Vapor Deposition (CVD) growth process.



April 16, 2026
IGI Report No LG789618407
CUT CORNERED RECT. MODIFIED BRILLIANT
9.40 X 6.60 X 4.60 MM
2.65 CARATS
FANCY INTENSE YELLOW
VS 1
69.7%
50.5%
Slightly Thick To Thick
Pointed
EXCELLENT
EXCELLENT
NONE
IGI LG789618407
Comments: This Laboratory Grown Diamond was created by Chemical Vapor Deposition (CVD) growth process.