



ELECTRONIC COPY

LG789618399
Report verification at igi.org



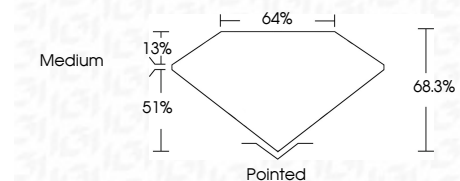
April 16, 2026
IGI Report Number **LG789618399**
Description **LABORATORY GROWN DIAMOND**

Shape and Cutting Style **CUT CORNERED
RECTANGULAR MODIFIED
BRILLIANT**

Measurements **9.09 X 6.16 X 4.21 MM**

GRADING RESULTS

Carat Weight **2.23 CARATS**
Color Grade **FANCY YELLOW**
Clarity Grade **VVS 2**



ADDITIONAL GRADING INFORMATION

Polish **EXCELLENT**
Symmetry **EXCELLENT**
Fluorescence **NONE**
Inscription(s) **IGI LG789618399**

Comments: This Laboratory Grown Diamond was created by Chemical Vapor Deposition (CVD) growth process.



April 16, 2026
IGI Report No LG789618399
CUT CORNERED RECT. MODIFIED BRILLIANT
9.09 X 6.16 X 4.21 MM
2.23 CARATS
FANCY YELLOW
VVS 2
68.3%
13%
51%
Medium
Pointed
EXCELLENT
EXCELLENT
NONE
IGI LG789618399
Comments: This Laboratory Grown Diamond was created by Chemical Vapor Deposition (CVD) growth process.

LABORATORY GROWN DIAMOND REPORT

April 16, 2026
IGI Report Number **LG789618399**
Description **LABORATORY GROWN DIAMOND**
Shape and Cutting Style **CUT CORNERED RECTANGULAR
MODIFIED BRILLIANT**
Measurements **9.09 X 6.16 X 4.21 MM**

GRADING RESULTS

Carat Weight **2.23 CARATS**
Color Grade **FANCY YELLOW**
Clarity Grade **VVS 2**

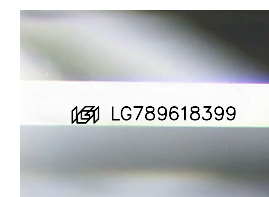
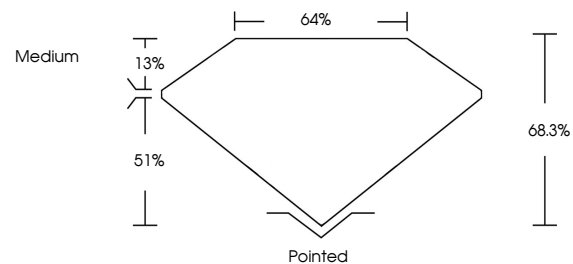
ADDITIONAL GRADING INFORMATION

Polish **EXCELLENT**
Symmetry **EXCELLENT**
Fluorescence **NONE**

Inscription(s) **IGI LG789618399**

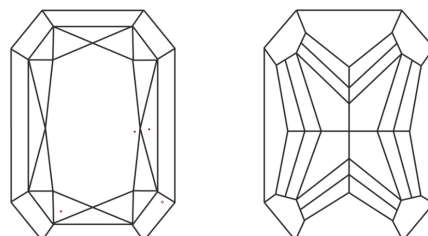
Comments: This Laboratory Grown Diamond was created by Chemical Vapor Deposition (CVD) growth process.

PROPORTIONS



Sample Image Used

CLARITY CHARACTERISTICS



KEY TO SYMBOLS

Red symbols indicate internal characteristics.
Green symbols indicate external characteristics.

COLOR

D E F G H I J Faint Very Light Light

CLARITY

FL	IF	VVS ¹⁻²	VS ¹⁻²	SI ¹⁻²	I ¹⁻³
Flawless	Internally Flawless	Very Very Slightly Included	Very Slightly Included	Slightly Included	Included

