



ELECTRONIC COPY

LG789618378 Report verification at igi.org



April 11, 2026 IGI Report Number LG789618378 Description LABORATORY GROWN DIAMOND Shape and Cutting Style CUSHION MODIFIED BRILLIANT Measurements 9.69 X 7.32 X 4.87 MM GRADING RESULTS Carat Weight 3.02 CARATS Color Grade FANCY INTENSE YELLOW Clarity Grade VS 2

April 11, 2026 IGI Report Number LG789618378 Description LABORATORY GROWN DIAMOND Shape and Cutting Style CUSHION MODIFIED BRILLIANT Measurements 9.69 X 7.32 X 4.87 MM

GRADING RESULTS

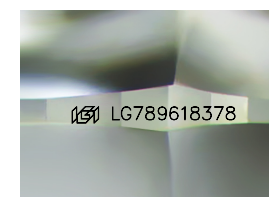
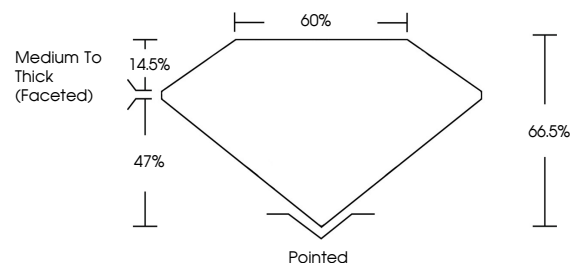
Carat Weight 3.02 CARATS Color Grade FANCY INTENSE YELLOW Clarity Grade VS 2

ADDITIONAL GRADING INFORMATION

Polish EXCELLENT Symmetry EXCELLENT Fluorescence NONE Inscription(s) IGI LG789618378

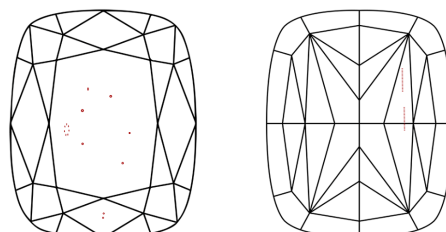
Comments: This Laboratory Grown Diamond was created by Chemical Vapor Deposition (CVD) growth process.

PROPORTIONS



Sample Image Used

CLARITY CHARACTERISTICS



KEY TO SYMBOLS

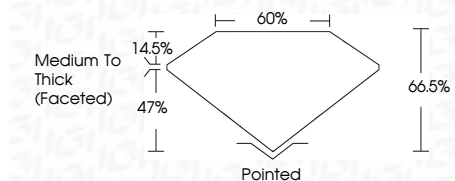
Red symbols indicate internal characteristics. Green symbols indicate external characteristics.

COLOR

D E F G H I J Faint Very Light Light

CLARITY

FL IF VS 1-2 VS 1-2 SI 1-2 I 1-3 Flawless Internally Flawless Very Very Slightly Included Very Slightly Included Slightly Included Included



ADDITIONAL GRADING INFORMATION

Polish EXCELLENT Symmetry EXCELLENT Fluorescence NONE Inscription(s) IGI LG789618378 Comments: This Laboratory Grown Diamond was created by Chemical Vapor Deposition (CVD) growth process.



April 11, 2026 IGI Report No LG789618378 CUSHION MODIFIED BRILLIANT 3.02 CARATS FANCY INTENSE YELLOW VS 2 9.69 X 7.32 X 4.87 MM 66.5% 47% 14.5% Medium To Thick (Faceted) Pointed EXCELLENT EXCELLENT NONE NONE IGI LG789618378 Comments: This Laboratory Grown Diamond was created by Chemical Vapor Deposition (CVD) growth process.