



**ELECTRONIC COPY**

LG789616516  
Report verification at [igi.org](http://igi.org)



April 7, 2026

IGI Report Number **LG789616516**

Description **LABORATORY GROWN DIAMOND**

Shape and Cutting Style **ROUND BRILLIANT**

Measurements **7.37 - 7.39 X 4.57 MM**

**GRADING RESULTS**

Carat Weight **1.54 CARAT**

Color Grade **D**

Clarity Grade **VVS 2**

Cut Grade **IDEAL**

April 7, 2026

IGI Report Number **LG789616516**

Description **LABORATORY GROWN DIAMOND**

Shape and Cutting Style **ROUND BRILLIANT**

Measurements **7.37 - 7.39 X 4.57 MM**

**GRADING RESULTS**

Carat Weight **1.54 CARAT**

Color Grade **D**

Clarity Grade **VVS 2**

Cut Grade **IDEAL**

**ADDITIONAL GRADING INFORMATION**

Polish **EXCELLENT**

Symmetry **EXCELLENT**

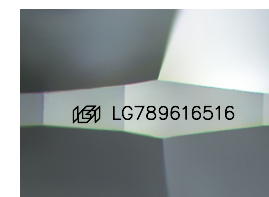
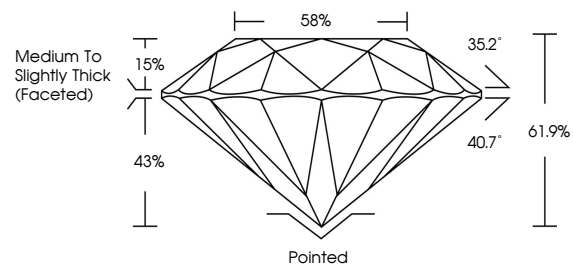
Fluorescence **NONE**

Inscription(s) **LG789616516**

Comments: As Grown - No indication of post-growth treatment.

This Laboratory Grown Diamond was created by High Pressure High Temperature (HPHT) growth process. Type II

**PROPORTIONS**



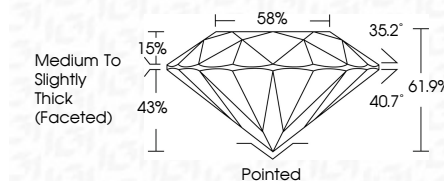
Sample Image Used

**COLOR**

D E F G H I J Faint Very Light Light

**CLARITY**

FL	IF	VVS <sup>1-2</sup>	VS <sup>1-2</sup>	SI <sup>1-2</sup>	I <sup>1-3</sup>
Flawless	Internally Flawless	Very Very Slightly Included	Very Slightly Included	Slightly Included	Included



**ADDITIONAL GRADING INFORMATION**

Polish **EXCELLENT**

Symmetry **EXCELLENT**

Fluorescence **NONE**

Inscription(s) **LG789616516**

Comments: As Grown - No indication of post-growth treatment.

This Laboratory Grown Diamond was created by High Pressure High Temperature (HPHT) growth process. Type II



**IGI**



April 7, 2026	IGI Report No LG789616516	1.54 CARAT	D	Pointed	EXCELLENT	EXCELLENT	NONE	LG789616516
ROUND BRILLIANT	7.37 - 7.39 X 4.57 MM	Color Grade	VVS 2	Depth	IDEAL	61.9%	Medium To Slightly Thick (Faceted)	
		Clarity Grade	IDEAL	Cut Grade	EXCELLENT	EXCELLENT	NONE	
		Table	15%	Girdle	Medium To Slightly Thick (Faceted)			
		Culet	Pointed	Polish	EXCELLENT			
		Symmetry	EXCELLENT	Symmetry	EXCELLENT			
		Fluorescence	NONE	Inscriptions(s)				
		Comments:	As Grown - No indication of post-growth treatment. This Laboratory Grown Diamond was created by High Pressure High Temperature (HPHT) growth process. Type II					