



LABORATORY GROWN DIAMOND REPORT

April 9, 2026
 IGI Report Number **LG789614400**
 Description **LABORATORY GROWN DIAMOND**
 Shape and Cutting Style **ROUND BRILLIANT**
 Measurements **5.87 - 5.91 X 3.63 MM**

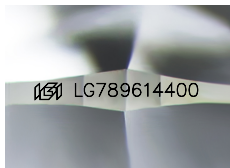
GRADING RESULTS

Carat Weight **0.78 CARAT**
 Color Grade **FANCY VIVID GREEN BLUE**
 Clarity Grade **INTERNALLY FLAWLESS**
 Cut Grade **IDEAL**

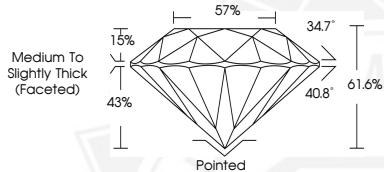
ADDITIONAL GRADING INFORMATION

Polish **EXCELLENT**
 Symmetry **EXCELLENT**
 Fluorescence **NONE**
 Inscription(s) **IGI LG789614400**

Comments: This Laboratory Grown Diamond was created by High Pressure High Temperature (HPHT) growth process. Indications of post-growth treatment.



Sample Image Used



April 9, 2026
 IGI Report Number **LG789614400**
ROUND BRILLIANT
LABORATORY GROWN DIAMOND
5.87 - 5.91 X 3.63 MM
 Carat Weight **0.78 CARAT**
 Color Grade **FANCY VIVID GREEN BLUE**
 Clarity Grade **I.F.**
 Cut Grade **IDEAL**
 Polish **EXCELLENT**
 Symmetry **EXCELLENT**
 Fluorescence **NONE**
 Inscription(s) **IGI LG789614400**

Comments: This Laboratory Grown Diamond was created by High Pressure High Temperature (HPHT) growth process. Indications of post-growth treatment.



April 9, 2026
 IGI Report Number **LG789614400**
ROUND BRILLIANT
LABORATORY GROWN DIAMOND
5.87 - 5.91 X 3.63 MM
 Carat Weight **0.78 CARAT**
 Color Grade **FANCY VIVID GREEN BLUE**
 Clarity Grade **I.F.**
 Cut Grade **IDEAL**
 Polish **EXCELLENT**
 Symmetry **EXCELLENT**
 Fluorescence **NONE**
 Inscription(s) **IGI LG789614400**

Comments: This Laboratory Grown Diamond was created by High Pressure High Temperature (HPHT) growth process. Indications of post-growth treatment.

THIS DOCUMENT WAS PRODUCED WITH THE FOLLOWING SECURITY MEASURES: SPECIAL DOCUMENT PAPER, INK SCREENS, WATERMARK, BACKGROUND DESIGNS, HOLOGRAM AND OTHER SECURITY FEATURES NOT LISTED AND DO EXCEED DOCUMENT SECURITY INDUSTRY GUIDELINES.