



LABORATORY GROWN DIAMOND REPORT

April 6, 2026
 IGI Report Number **LG789614384**
 Description **LABORATORY GROWN DIAMOND**
 Shape and Cutting Style **OVAL BRILLIANT**
 Measurements **7.80 X 5.20 X 3.17 MM**

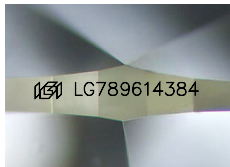
GRADING RESULTS

Carat Weight **0.80 CARAT**
 Color Grade **E**
 Clarity Grade **INTERNALLY FLAWLESS**

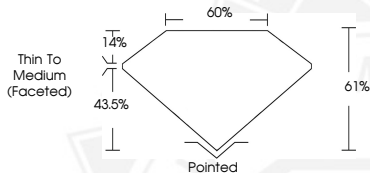
ADDITIONAL GRADING INFORMATION

Polish **EXCELLENT**
 Symmetry **EXCELLENT**
 Fluorescence **NONE**
 Inscription(s) **IGI LG789614384**

Comments: As Grown - No indication of post-growth treatment.
 This Laboratory Grown Diamond was created by High Pressure High Temperature (HPHT) growth process.
 Type II



Sample Image Used



April 6, 2026
 IGI Report Number **LG789614384**
 OVAL BRILLIANT
 LABORATORY GROWN DIAMOND
 7.80 X 5.20 X 3.17 MM
 Carat Weight **0.80 CARAT**
 Color Grade **E**
 Clarity Grade **I.F.**
 Polish **EXCELLENT**
 Symmetry **EXCELLENT**
 Fluorescence **NONE**
 Inscription(s) **IGI LG789614384**

Comments: As Grown - No indication of post-growth treatment. This Laboratory Grown Diamond was created by High Pressure High Temperature (HPHT) growth process. Type II



April 6, 2026
 IGI Report Number **LG789614384**
 OVAL BRILLIANT
 LABORATORY GROWN DIAMOND
 7.80 X 5.20 X 3.17 MM
 Carat Weight **0.80 CARAT**
 Color Grade **E**
 Clarity Grade **I.F.**
 Polish **EXCELLENT**
 Symmetry **EXCELLENT**
 Fluorescence **NONE**
 Inscription(s) **IGI LG789614384**

Comments: As Grown - No indication of post-growth treatment. This Laboratory Grown Diamond was created by High Pressure High Temperature (HPHT) growth process. Type II



THIS DOCUMENT WAS PRODUCED WITH THE FOLLOWING SECURITY MEASURES: SPECIAL DOCUMENT PAPER, INK SCREENS, WATERMARK, BACKGROUND DESIGNS, HOLOGRAM AND OTHER SECURITY FEATURES NOT LISTED AND DO EXCEED DOCUMENT SECURITY INDUSTRY GUIDELINES.