



ELECTRONIC COPY

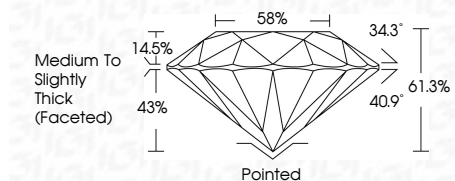
LG789613619 Report verification at igi.org



April 11, 2026 IGI Report Number LG789613619 Description LABORATORY GROWN DIAMOND Shape and Cutting Style ROUND BRILLIANT Measurements 6.59 - 6.62 X 4.05 MM

GRADING RESULTS

Carat Weight 1.08 CARAT Color Grade D Clarity Grade VS 2 Cut Grade IDEAL



ADDITIONAL GRADING INFORMATION

Polish EXCELLENT Symmetry EXCELLENT Fluorescence NONE Inscription(s) LG789613619 Comments: HEARTS & ARROWS As Grown - No indication of post-growth treatment. This Laboratory Grown Diamond was created by High Pressure High Temperature (HPHT) growth process. Type II



April 11, 2026 IGI Report No LG789613619 ROUND BRILLIANT 1.08 CARAT D VS 2 IDEAL 61.3% 58% Medium To Slightly Thick (Faceted) Pointed EXCELLENT EXCELLENT NONE LG789613619

Comments: HEARTS & ARROWS As Grown - No indication of post-growth treatment. This Laboratory Grown Diamond was created by High Pressure High Temperature (HPHT) growth process. Type II

April 11, 2026 IGI Report Number LG789613619 Description LABORATORY GROWN DIAMOND Shape and Cutting Style ROUND BRILLIANT Measurements 6.59 - 6.62 X 4.05 MM

GRADING RESULTS

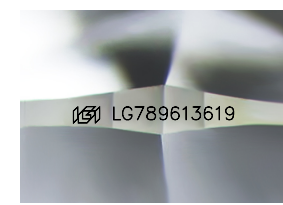
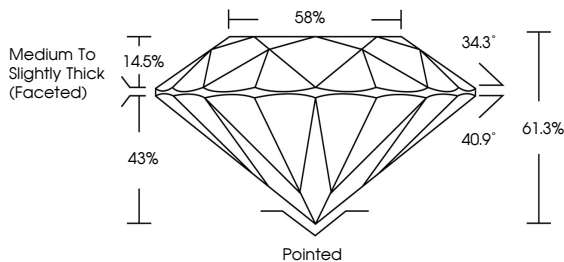
Carat Weight 1.08 CARAT Color Grade D Clarity Grade VS 2 Cut Grade IDEAL

ADDITIONAL GRADING INFORMATION

Polish EXCELLENT Symmetry EXCELLENT Fluorescence NONE Inscription(s) LG789613619

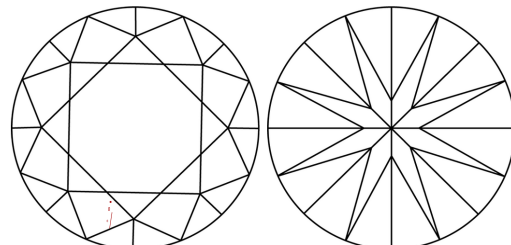
Comments: HEARTS & ARROWS As Grown - No indication of post-growth treatment. This Laboratory Grown Diamond was created by High Pressure High Temperature (HPHT) growth process. Type II

PROPORTIONS



Sample Image Used

CLARITY CHARACTERISTICS



KEY TO SYMBOLS

Red symbols indicate internal characteristics. Green symbols indicate external characteristics.



COLOR

Color scale table with categories D, E, F, G, H, I, J, Faint, Very Light, Light

CLARITY

Clarity scale table with categories FL, IF, VS 1-2, VS 1-2, SI 1-2, I 1-3, Flawless, Internally Flawless, Very Very Slightly Included, Very Slightly Included, Slightly Included, Included

