



**ELECTRONIC COPY**

LG789612851  
Report verification at [igi.org](http://igi.org)



April 18, 2026

IGI Report Number **LG789612851**

Description **LABORATORY GROWN DIAMOND**

Shape and Cutting Style **CUSHION MODIFIED BRILLIANT**

Measurements **10.95 X 8.81 X 5.89 MM**

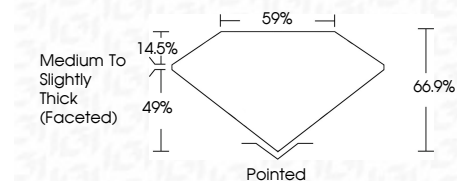
**GRADING RESULTS**

Carat Weight **4.23 CARATS**

Color Grade **D**

Clarity Grade **FLAWLESS**

Cut Grade **EXCELLENT**



**ADDITIONAL GRADING INFORMATION**

Polish **EXCELLENT**

Symmetry **EXCELLENT**

Fluorescence **NONE**

Inscription(s) **IGI LG789612851**

Comments: As Grown - No indication of post-growth treatment.

This Laboratory Grown Diamond was created by High Pressure High Temperature (HPHT) growth process. Type II



|                                   |                           |   |                  |
|-----------------------------------|---------------------------|---|------------------|
| April 18, 2026                    | IGI Report No LG789612851 | <b>4.23 CARATS</b>  | <b>D</b>         |
| <b>CUSHION MODIFIED BRILLIANT</b> |                           | <b>FLAWLESS</b>   | <b>EXCELLENT</b> |
| 10.95 X 8.81 X 5.89 MM            | Color Grade               | 66.9%   | 59%              |
|                                   | Clarity Grade             | Medium To Slightly Thick (Faceted)  |                  |
|                                   | Cut Grade                 | Pointed   | EXCELLENT        |
|                                   | Polish                    | Symmetry  | EXCELLENT        |
|                                   | Symmetry                  | Fluorescence  | NONE             |
|                                   | Fluorescence              | Inscription(s)  | IGI LG789612851  |
|                                   | Inscription(s)            | Comments: As Grown - No indication of post-growth treatment. This Laboratory Grown Diamond was created by High Pressure High Temperature (HPHT) growth process. Type II |                  |

**LABORATORY GROWN DIAMOND REPORT**

April 18, 2026  
IGI Report Number **LG789612851**  
Description **LABORATORY GROWN DIAMOND**  
Shape and Cutting Style **CUSHION MODIFIED BRILLIANT**  
Measurements **10.95 X 8.81 X 5.89 MM**

**GRADING RESULTS**

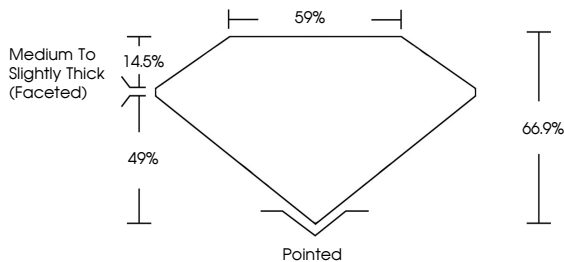
Carat Weight **4.23 CARATS**  
Color Grade **D**  
Clarity Grade **FLAWLESS**  
Cut Grade **EXCELLENT**

**ADDITIONAL GRADING INFORMATION**

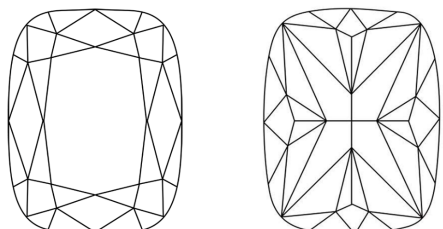
Polish **EXCELLENT**  
Symmetry **EXCELLENT**  
Fluorescence **NONE**  
Inscription(s) **IGI LG789612851**

Comments: As Grown - No indication of post-growth treatment.  
This Laboratory Grown Diamond was created by High Pressure High Temperature (HPHT) growth process. Type II

**PROPORTIONS**

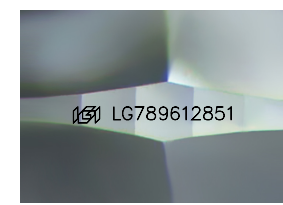


**CLARITY CHARACTERISTICS**



**KEY TO SYMBOLS**

Red symbols indicate internal characteristics.  
Green symbols indicate external characteristics.



Sample Image Used

**COLOR**

|   |   |   |   |   |   |   |       |            |       |
|---|---|---|---|---|---|---|-------|------------|-------|
| D | E | F | G | H | I | J | Faint | Very Light | Light |
|---|---|---|---|---|---|---|-------|------------|-------|

**CLARITY**

|          |                     |                             |                        |                   |                  |
|----------|---------------------|-----------------------------|------------------------|-------------------|------------------|
| FL       | IF                  | VS <sup>1-2</sup>           | VS <sup>1-2</sup>      | SI <sup>1-2</sup> | I <sup>1-3</sup> |
| Flawless | Internally Flawless | Very Very Slightly Included | Very Slightly Included | Slightly Included | Included         |

