



ELECTRONIC COPY

LG789612454
Report verification at igi.org



April 21, 2026

IGI Report Number **LG789612454**

Description **LABORATORY GROWN DIAMOND**

Shape and Cutting Style **PRINCESS CUT**

Measurements **6.45 X 6.35 X 4.47 MM**

GRADING RESULTS

Carat Weight **1.56 CARAT**

Color Grade **G**

Clarity Grade **VVS 2**

April 21, 2026

IGI Report Number **LG789612454**

Description **LABORATORY GROWN DIAMOND**

Shape and Cutting Style **PRINCESS CUT**

Measurements **6.45 X 6.35 X 4.47 MM**

GRADING RESULTS

Carat Weight **1.56 CARAT**

Color Grade **G**

Clarity Grade **VVS 2**

ADDITIONAL GRADING INFORMATION

Polish **EXCELLENT**

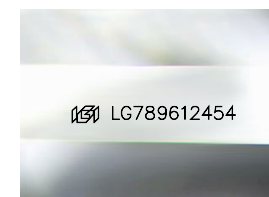
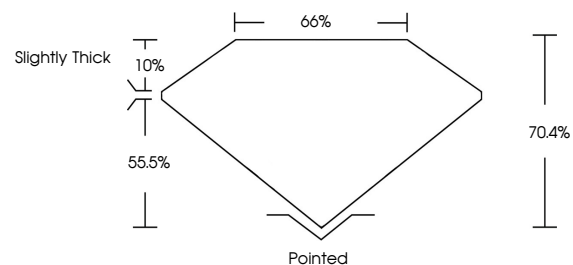
Symmetry **VERY GOOD**

Fluorescence **NONE**

Inscription(s) **IGI LG789612454**

Comments: This Laboratory Grown Diamond was created by Chemical Vapor Deposition (CVD) growth process.
Type IIa

PROPORTIONS



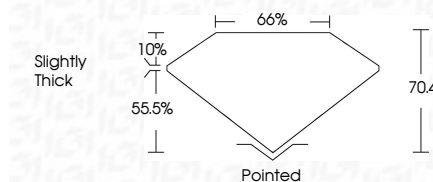
Sample Image Used

COLOR

D E F G H I J Faint Very Light Light

CLARITY

FL	IF	VVS ¹⁻²	VS ¹⁻²	SI ¹⁻²	I ¹⁻³
Flawless	Internally Flawless	Very Very Slightly Included	Very Slightly Included	Slightly Included	Included



ADDITIONAL GRADING INFORMATION

Polish **EXCELLENT**

Symmetry **VERY GOOD**

Fluorescence **NONE**

Inscription(s) **IGI LG789612454**

Comments: This Laboratory Grown Diamond was created by Chemical Vapor Deposition (CVD) growth process.
Type IIa



IGI



April 21, 2026
IGI Report No LG789612454
PRINCESS CUT
6.45 X 6.35 X 4.47 MM
Carat Weight **1.56 CARAT**
Color Grade **G**
Clarity Grade **VVS 2**
Table **70.4%**
Girdle **65%**
Culet **Slightly Thick**
Polish **Pointed**
Symmetry **EXCELLENT**
Fluorescence **VERY GOOD**
Inscription(s) **NONE**
IGI LG789612454

Comments: This Laboratory Grown Diamond was created by Chemical Vapor Deposition (CVD) growth process.
Type IIa