



**ELECTRONIC COPY**

LG789612433  
Report verification at igi.org



April 23, 2026  
IGI Report Number **LG789612433**  
Description **LABORATORY GROWN DIAMOND**  
Shape and Cutting Style **CUT CORNERED  
RECTANGULAR MODIFIED  
BRILLIANT**  
Measurements **9.77 X 6.83 X 4.53 MM**  
**GRADING RESULTS**  
Carat Weight **2.57 CARATS**  
Color Grade **F**  
Clarity Grade **VS 2**

April 23, 2026  
IGI Report Number **LG789612433**  
Description **LABORATORY GROWN DIAMOND**  
Shape and Cutting Style **CUT CORNERED RECTANGULAR  
MODIFIED BRILLIANT**  
Measurements **9.77 X 6.83 X 4.53 MM**

**GRADING RESULTS**

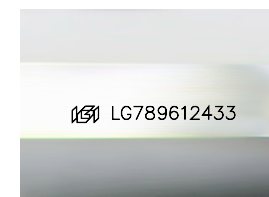
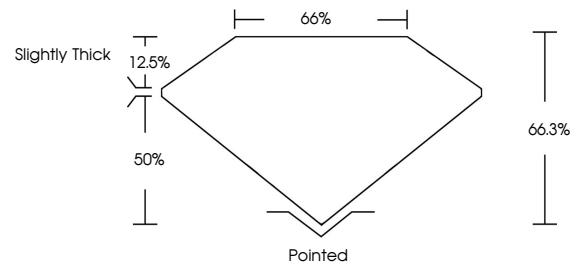
Carat Weight **2.57 CARATS**  
Color Grade **F**  
Clarity Grade **VS 2**

**ADDITIONAL GRADING INFORMATION**

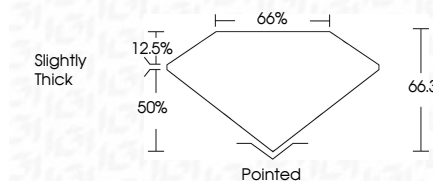
Polish **EXCELLENT**  
Symmetry **EXCELLENT**  
Fluorescence **NONE**  
Inscription(s) **LG789612433**

Comments: This Laboratory Grown Diamond was created by Chemical Vapor Deposition (CVD) growth process. Type IIa

**PROPORTIONS**



Sample Image Used



**COLOR**

D E F G H I J Faint Very Light Light

**CLARITY**

FL	IF	VS <sup>1-2</sup>	VS <sup>1-2</sup>	SI <sup>1-2</sup>	I <sup>1-3</sup>
Flawless	Internally Flawless	Very Very Slightly Included	Very Slightly Included	Slightly Included	Included

**ADDITIONAL GRADING INFORMATION**

Polish **EXCELLENT**  
Symmetry **EXCELLENT**  
Fluorescence **NONE**  
Inscription(s) **LG789612433**  
Comments: This Laboratory Grown Diamond was created by Chemical Vapor Deposition (CVD) growth process. Type IIa



**IGI**



April 23, 2026  
IGI Report No LG789612433  
CUT CORNERED RECT. MODIFIED BRILLIANT  
9.77 X 6.83 X 4.53 MM  
Carat Weight **2.57 CARATS**  
Color Grade **F**  
Clarity Grade **VS 2**  
Table **66.3%**  
Girdle **65%**  
Culet **Slightly Thick**  
Polish **Pointed**  
Symmetry **EXCELLENT**  
Fluorescence **NONE**  
Inscription(s) **LG789612433**

Comments: This Laboratory Grown Diamond was created by Chemical Vapor Deposition (CVD) growth process. Type IIa