



ELECTRONIC COPY

LG789612413
Report verification at igi.org



April 22, 2026

IGI Report Number **LG789612413**

Description **LABORATORY GROWN DIAMOND**

Shape and Cutting Style **CUT CORNERED
RECTANGULAR MODIFIED
BRILLIANT**

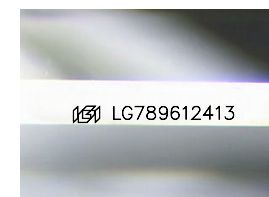
Measurements **8.29 X 5.70 X 3.75 MM**

GRADING RESULTS

Carat Weight **1.59 CARAT**

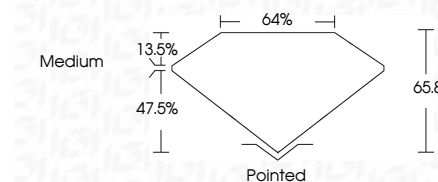
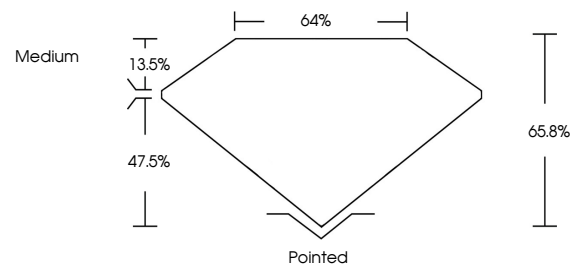
Color Grade **E**

Clarity Grade **VVS 2**



Sample Image Used

PROPORTIONS



April 22, 2026

IGI Report Number **LG789612413**

Description **LABORATORY GROWN DIAMOND**

Shape and Cutting Style **CUT CORNERED RECTANGULAR
MODIFIED BRILLIANT**

Measurements **8.29 X 5.70 X 3.75 MM**

GRADING RESULTS

Carat Weight **1.59 CARAT**

Color Grade **E**

Clarity Grade **VVS 2**

ADDITIONAL GRADING INFORMATION

Polish **EXCELLENT**

Symmetry **EXCELLENT**

Fluorescence **NONE**

Inscription(s) **IGI LG789612413**

Comments: This Laboratory Grown Diamond was created by Chemical Vapor Deposition (CVD) growth process. Type IIa

COLOR

D E F G H I J Faint Very Light Light

CLARITY

FL	IF	VVS ¹⁻²	VS ¹⁻²	SI ¹⁻²	I ¹⁻³
Flawless	Internally Flawless	Very Very Slightly Included	Very Slightly Included	Slightly Included	Included

ADDITIONAL GRADING INFORMATION

Polish **EXCELLENT**

Symmetry **EXCELLENT**

Fluorescence **NONE**

Inscription(s) **IGI LG789612413**

Comments: This Laboratory Grown Diamond was created by Chemical Vapor Deposition (CVD) growth process. Type IIa



IGI

April 22, 2026
IGI Report No LG789612413
CUT CORNERED RECT. MODIFIED BRILLIANT
8.29 X 5.70 X 3.75 MM
1.59 CARAT
E
VVS 2
65.8%
47.5%
Medium
Pointed
EXCELLENT
EXCELLENT
NONE
IGI LG789612413

Comments: This Laboratory Grown Diamond was created by Chemical Vapor Deposition (CVD) growth process. Type IIa