



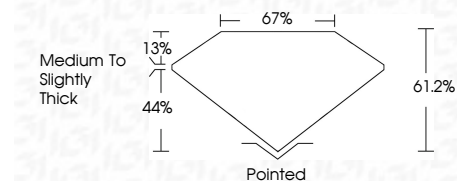
**ELECTRONIC COPY**

LG789610861  
Report verification at igi.org



April 8, 2026  
IGI Report Number **LG789610861**  
Description **LABORATORY GROWN DIAMOND**  
Shape and Cutting Style **OCTAGONAL STEP CUT**  
Measurements **7.60 X 7.57 X 4.63 MM**

**GRADING RESULTS**  
Carat Weight **2.06 CARATS**  
Color Grade **D**  
Clarity Grade **VVS 2**



**ADDITIONAL GRADING INFORMATION**  
Polish **EXCELLENT**  
Symmetry **EXCELLENT**  
Fluorescence **NONE**  
Inscription(s) **IGI LG789610861**  
Comments: As Grown - No indication of post-growth treatment.  
This Laboratory Grown Diamond was created by High Pressure High Temperature (HPHT) growth process.  
Type II



April 8, 2026  
IGI Report No LG789610861  
**OCTAGONAL STEP CUT**  
7.60 X 7.57 X 4.63 MM  
2.06 CARATS  
D  
VVS 2  
61.2%  
67%  
Medium to Slightly Thick  
Pointed  
EXCELLENT  
EXCELLENT  
NONE  
IGI LG789610861  
Comments: As Grown - No indication of post-growth treatment.  
This Laboratory Grown Diamond was created by High Pressure High Temperature (HPHT) growth process.  
Type II

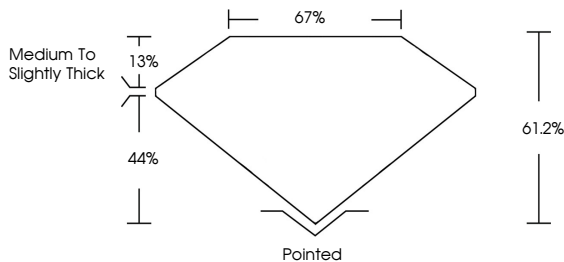
April 8, 2026  
IGI Report Number **LG789610861**  
Description **LABORATORY GROWN DIAMOND**  
Shape and Cutting Style **OCTAGONAL STEP CUT**  
Measurements **7.60 X 7.57 X 4.63 MM**

**GRADING RESULTS**  
Carat Weight **2.06 CARATS**  
Color Grade **D**  
Clarity Grade **VVS 2**

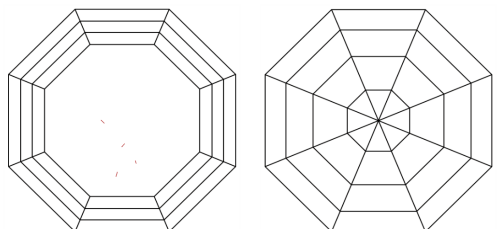
**ADDITIONAL GRADING INFORMATION**  
Polish **EXCELLENT**  
Symmetry **EXCELLENT**  
Fluorescence **NONE**  
Inscription(s) **IGI LG789610861**

Comments: As Grown - No indication of post-growth treatment.  
This Laboratory Grown Diamond was created by High Pressure High Temperature (HPHT) growth process.  
Type II

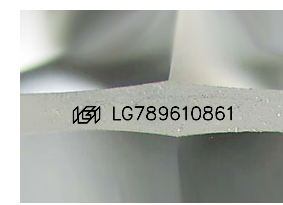
**PROPORTIONS**



**CLARITY CHARACTERISTICS**



**KEY TO SYMBOLS**  
Red symbols indicate internal characteristics.  
Green symbols indicate external characteristics.



Sample Image Used

**COLOR**

D	E	F	G	H	I	J	Faint	Very Light	Light
---	---	---	---	---	---	---	-------	------------	-------

**CLARITY**

FL	IF	VVS <sup>1-2</sup>	VS <sup>1-2</sup>	SI <sup>1-2</sup>	I <sup>1-3</sup>
Flawless	Internally Flawless	Very Very Slightly Included	Very Slightly Included	Slightly Included	Included

