



**ELECTRONIC COPY**

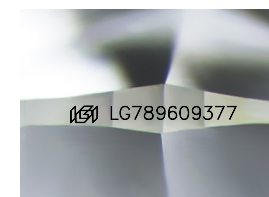
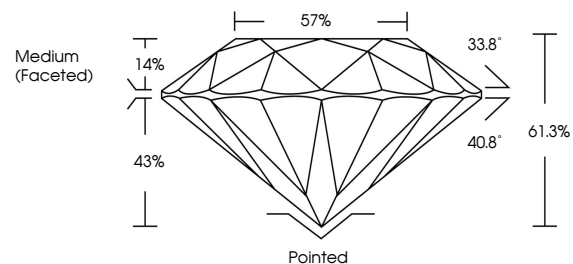
LG789609377  
Report verification at igi.org



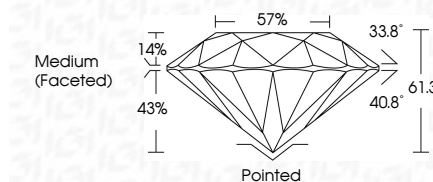
April 8, 2026  
IGI Report Number **LG789609377**  
Description **LABORATORY GROWN DIAMOND**  
Shape and Cutting Style **ROUND BRILLIANT**  
Measurements **7.38 - 7.40 X 4.53 MM**  
**GRADING RESULTS**  
Carat Weight **1.53 CARAT**  
Color Grade **D**  
Clarity Grade **VS 1**  
Cut Grade **IDEAL**

April 8, 2026  
IGI Report Number **LG789609377**  
Description **LABORATORY GROWN DIAMOND**  
Shape and Cutting Style **ROUND BRILLIANT**  
Measurements **7.38 - 7.40 X 4.53 MM**  
**GRADING RESULTS**  
Carat Weight **1.53 CARAT**  
Color Grade **D**  
Clarity Grade **VS 1**  
Cut Grade **IDEAL**

**PROPORTIONS**



Sample Image Used



**ADDITIONAL GRADING INFORMATION**

Polish **EXCELLENT**  
Symmetry **EXCELLENT**  
Fluorescence **NONE**  
Inscription(s) **IGI LG789609377**

Comments: This Laboratory Grown Diamond was created by Chemical Vapor Deposition (CVD) growth process. Type IIa

**ADDITIONAL GRADING INFORMATION**

Polish **EXCELLENT**  
Symmetry **EXCELLENT**  
Fluorescence **NONE**  
Inscription(s) **IGI LG789609377**  
Comments: This Laboratory Grown Diamond was created by Chemical Vapor Deposition (CVD) growth process. Type IIa

**COLOR**

D E F G H I J Faint Very Light Light

**CLARITY**

FL	IF	VS <sup>1-2</sup>	VS <sup>1-2</sup>	SI <sup>1-2</sup>	I <sup>1-3</sup>
Flawless	Internally Flawless	Very Very Slightly Included	Very Slightly Included	Slightly Included	Included



**IGI**



April 8, 2026  
IGI Report No LG789609377  
**ROUND BRILLIANT**  
7.38 - 7.40 X 4.53 MM  
1.53 CARAT  
D  
VS 1  
IDEAL  
61.3%  
57%  
Medium (Faceted)Pointed  
EXCELLENT  
EXCELLENT  
NONE  
IGI LG789609377  
Comments: This Laboratory Grown Diamond was created by Chemical Vapor Deposition (CVD) growth process. Type IIa