



ELECTRONIC COPY

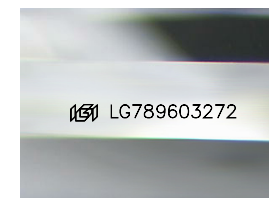
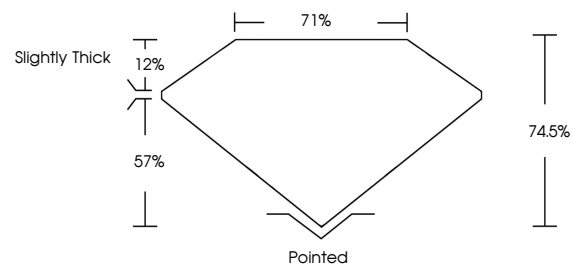
LG789603272
Report verification at igi.org



April 9, 2026
IGI Report Number **LG789603272**
Description **LABORATORY GROWN DIAMOND**
Shape and Cutting Style **PRINCESS CUT**
Measurements **6.74 X 6.62 X 4.93 MM**
GRADING RESULTS
Carat Weight **2.01 CARATS**
Color Grade **FANCY VIVID GREEN**
Clarity Grade **VS 2**

April 9, 2026
IGI Report Number **LG789603272**
Description **LABORATORY GROWN DIAMOND**
Shape and Cutting Style **PRINCESS CUT**
Measurements **6.74 X 6.62 X 4.93 MM**

PROPORTIONS

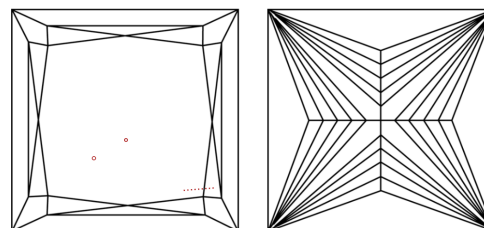


Sample Image Used

GRADING RESULTS

Carat Weight **2.01 CARATS**
Color Grade **FANCY VIVID GREEN**
Clarity Grade **VS 2**

CLARITY CHARACTERISTICS



ADDITIONAL GRADING INFORMATION

Polish **EXCELLENT**
Symmetry **EXCELLENT**
Fluorescence **NONE**
Inscription(s) **IGI LG789603272**

Comments: This Laboratory Grown Diamond was created by Chemical Vapor Deposition (CVD) growth process. Indications of post-growth treatment.

KEY TO SYMBOLS

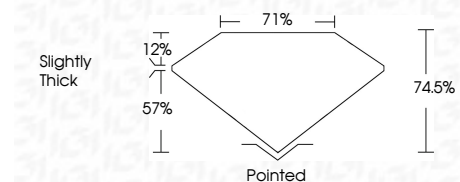
Red symbols indicate internal characteristics.
Green symbols indicate external characteristics.

COLOR

D E F G H I J Faint Very Light Light

CLARITY

FL	IF	VS ¹⁻²	VS ¹⁻²	SI ¹⁻²	I ¹⁻³
Flawless	Internally Flawless	Very Very Slightly Included	Very Slightly Included	Slightly Included	Included



ADDITIONAL GRADING INFORMATION

Polish **EXCELLENT**
Symmetry **EXCELLENT**
Fluorescence **NONE**
Inscription(s) **IGI LG789603272**
Comments: This Laboratory Grown Diamond was created by Chemical Vapor Deposition (CVD) growth process. Indications of post-growth treatment.



IGI



April 9, 2026
IGI Report No **LG789603272**
PRINCESS CUT
2.01 CARATS
Carat Weight **FANCY VIVID GREEN**
Color Grade **VS 2**
Depth **74.6%**
Table **71%**
Girdle **Slightly Thick**
Culet **Pointed**
Polish **EXCELLENT**
Symmetry **EXCELLENT**
Fluorescence **NONE**
Inscription(s) **IGI LG789603272**

Comments: This Laboratory Grown Diamond was created by Chemical Vapor Deposition (CVD) growth process. Indications of post-growth treatment.