



ELECTRONIC COPY

LG788688389 Report verification at igi.org

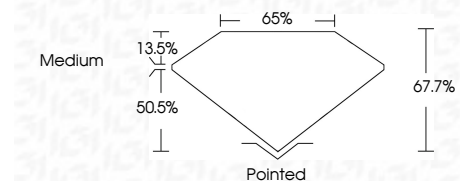


April 6, 2026 IGI Report Number LG788688389 Description LABORATORY GROWN DIAMOND Shape and Cutting Style CUT CORNERED RECTANGULAR MODIFIED BRILLIANT

Measurements 10.55 X 7.03 X 4.76 MM

GRADING RESULTS

Carat Weight 3.02 CARATS Color Grade D Clarity Grade VVS 2



ADDITIONAL GRADING INFORMATION

Polish EXCELLENT Symmetry EXCELLENT Fluorescence NONE Inscription(s) IGI LG788688389 Comments: This Laboratory Grown Diamond was created by Chemical Vapor Deposition (CVD) growth process. Type IIa



April 6, 2026 IGI Report No LG788688389 CUT CORNERED RECT. MODIFIED BRILLIANT 3.02 CARATS D 3.02 CARATS D VVS 2 67.7% 65% Medium Pointed EXCELLENT EXCELLENT NONE NONE IGI LG788688389 Comments: This Laboratory Grown Diamond was created by Chemical Vapor Deposition (CVD) growth process. Type IIa

April 6, 2026 IGI Report Number LG788688389 Description LABORATORY GROWN DIAMOND Shape and Cutting Style CUT CORNERED RECTANGULAR MODIFIED BRILLIANT Measurements 10.55 X 7.03 X 4.76 MM

GRADING RESULTS

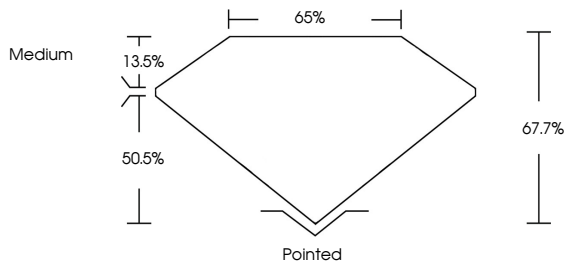
Carat Weight 3.02 CARATS Color Grade D Clarity Grade VVS 2

ADDITIONAL GRADING INFORMATION

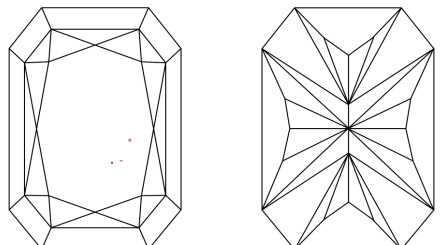
Polish EXCELLENT Symmetry EXCELLENT Fluorescence NONE Inscription(s) IGI LG788688389

Comments: This Laboratory Grown Diamond was created by Chemical Vapor Deposition (CVD) growth process. Type IIa

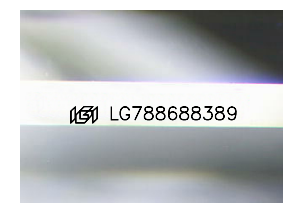
PROPORTIONS



CLARITY CHARACTERISTICS



KEY TO SYMBOLS Red symbols indicate internal characteristics. Green symbols indicate external characteristics.



Sample Image Used

COLOR

D E F G H I J Faint Very Light Light

CLARITY

FL IF VVS 1-2 VS 1-2 SI 1-2 I 1-3 Flawless Internally Flawless Very Very Slightly Included Very Slightly Included Slightly Included Included

