



**ELECTRONIC COPY**

LG788688140  
Report verification at igi.org



April 16, 2026

IGI Report Number **LG788688140**

Description **LABORATORY GROWN DIAMOND**

Shape and Cutting Style **CUT CORNERED  
RECTANGULAR MODIFIED  
BRILLIANT**

Measurements **6.99 X 4.96 X 3.43 MM**

**GRADING RESULTS**

Carat Weight **1.09 CARAT**

Color Grade **FANCY VIVID PINK**

Clarity Grade **VVS 2**

April 16, 2026

IGI Report Number **LG788688140**

Description **LABORATORY GROWN DIAMOND**

Shape and Cutting Style **CUT CORNERED RECTANGULAR  
MODIFIED BRILLIANT**

Measurements **6.99 X 4.96 X 3.43 MM**

**GRADING RESULTS**

Carat Weight **1.09 CARAT**

Color Grade **FANCY VIVID PINK**

Clarity Grade **VVS 2**

**ADDITIONAL GRADING INFORMATION**

Polish **EXCELLENT**

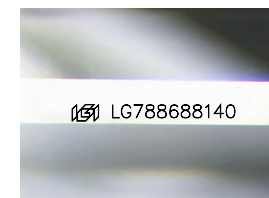
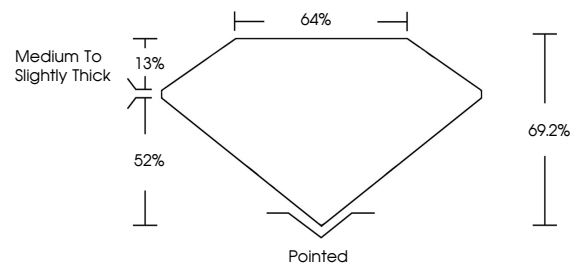
Symmetry **EXCELLENT**

Fluorescence **STRONG**

Inscription(s) **IGI LG788688140**

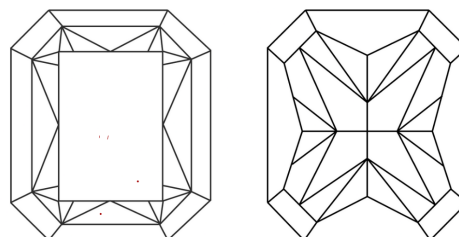
Comments: This Laboratory Grown Diamond was created by Chemical Vapor Deposition (CVD) growth process. Indications of post-growth treatment.

**PROPORTIONS**



Sample Image Used

**CLARITY CHARACTERISTICS**



**KEY TO SYMBOLS**

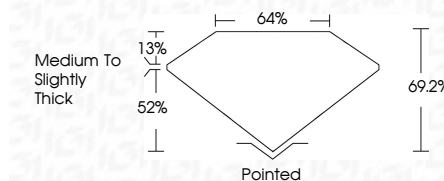
Red symbols indicate internal characteristics.  
Green symbols indicate external characteristics.

**COLOR**

D E F G H I J Faint Very Light Light

**CLARITY**

FL	IF	VVS <sup>1-2</sup>	VS <sup>1-2</sup>	SI <sup>1-2</sup>	I <sup>1-3</sup>
Flawless	Internally Flawless	Very Very Slightly Included	Very Slightly Included	Slightly Included	Included



**ADDITIONAL GRADING INFORMATION**

Polish **EXCELLENT**

Symmetry **EXCELLENT**

Fluorescence **STRONG**

Inscription(s) **IGI LG788688140**

Comments: This Laboratory Grown Diamond was created by Chemical Vapor Deposition (CVD) growth process. Indications of post-growth treatment.



**IGI**



April 16, 2026  
IGI Report No LG788688140  
CUT CORNERED RECT. MODIFIED BRILLIANT  
6.99 X 4.96 X 3.43 MM  
1.09 CARAT  
FANCY VIVID PINK  
VVS 2  
69.2%  
52%  
13%  
Medium to Slightly Thick  
Pointed  
EXCELLENT  
EXCELLENT  
STRONG  
IGI LG788688140

Comments: This Laboratory Grown Diamond was created by Chemical Vapor Deposition (CVD) growth process. Indications of post-growth treatment.