



**ELECTRONIC COPY**

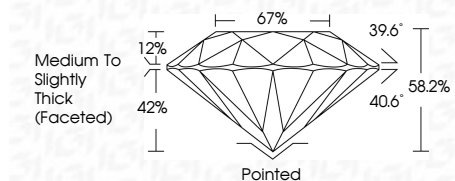
LG788688131  
Report verification at igi.org



April 15, 2026  
IGI Report Number **LG788688131**  
Description **LABORATORY GROWN DIAMOND**  
Shape and Cutting Style **ROUND MIXED CUT**  
Measurements **6.81 - 6.82 X 3.97 MM**

**GRADING RESULTS**

Carat Weight **1.25 CARAT**  
Color Grade **E**  
Clarity Grade **VS 2**

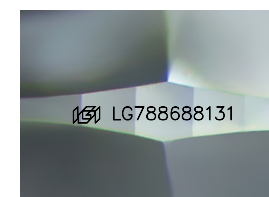


**ADDITIONAL GRADING INFORMATION**

Polish **EXCELLENT**  
Symmetry **EXCELLENT**  
Fluorescence **NONE**  
Inscription(s) **IGI LG788688131**  
Comments: This Laboratory Grown Diamond was created by Chemical Vapor Deposition (CVD) growth process. Type IIa

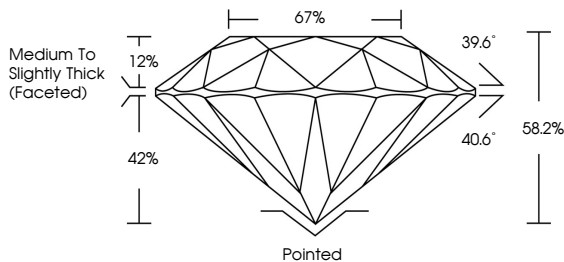


April 15, 2026  
IGI Report No LG788688131  
**ROUND MIXED CUT**  
6.81 - 6.82 X 3.97 MM  
1.25 CARAT  
E  
VS 2  
68.2%  
67%  
Medium to Slightly Thick (Faceted)  
Pointed  
EXCELLENT  
EXCELLENT  
NONE  
IGI LG788688131  
Comments: This Laboratory Grown Diamond was created by Chemical Vapor Deposition (CVD) growth process. Type IIa

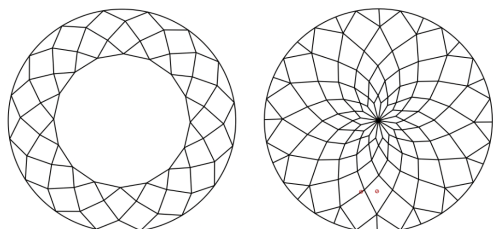


Sample Image Used

**PROPORTIONS**



**CLARITY CHARACTERISTICS**



**KEY TO SYMBOLS**

Red symbols indicate internal characteristics.  
Green symbols indicate external characteristics.

**COLOR**

D E F G H I J Faint Very Light Light

**CLARITY**

FL	IF	VS <sup>1-2</sup>	VS <sup>1-2</sup>	SI <sup>1-2</sup>	I <sup>1-3</sup>
Flawless	Internally Flawless	Very Very Slightly Included	Very Slightly Included	Slightly Included	Included

