



ELECTRONIC COPY

LG788688119
Report verification at igi.org



April 16, 2026
IGI Report Number **LG788688119**
Description **LABORATORY GROWN DIAMOND**
Shape and Cutting Style **ROUND MIXED CUT**
Measurements **6.31 - 6.31 X 3.89 MM**

GRADING RESULTS

Carat Weight **1.05 CARAT**
Color Grade **FANCY INTENSE PINK**
Clarity Grade **VVS 2**

April 16, 2026
IGI Report Number **LG788688119**
Description **LABORATORY GROWN DIAMOND**
Shape and Cutting Style **ROUND MIXED CUT**
Measurements **6.31 - 6.31 X 3.89 MM**

GRADING RESULTS

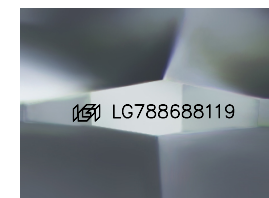
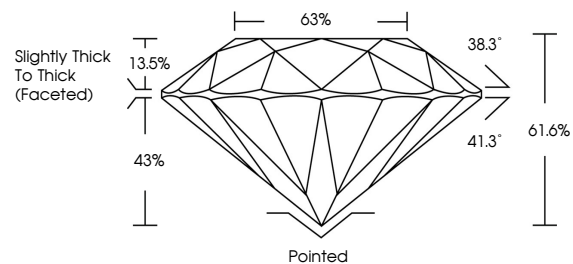
Carat Weight **1.05 CARAT**
Color Grade **FANCY INTENSE PINK**
Clarity Grade **VVS 2**

ADDITIONAL GRADING INFORMATION

Polish **EXCELLENT**
Symmetry **EXCELLENT**
Fluorescence **SLIGHT**
Inscription(s) **IGI LG788688119**

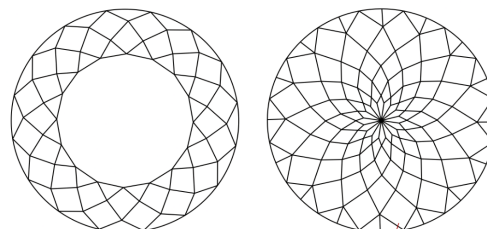
Comments: This Laboratory Grown Diamond was created by Chemical Vapor Deposition (CVD) growth process.
Indications of post-growth treatment.

PROPORTIONS



Sample Image Used

CLARITY CHARACTERISTICS



KEY TO SYMBOLS

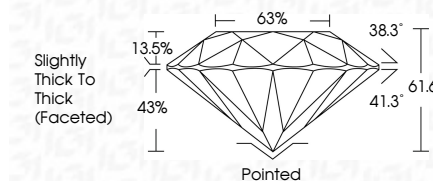
Red symbols indicate internal characteristics.
Green symbols indicate external characteristics.

COLOR

D E F G H I J Faint Very Light Light

CLARITY

FL	IF	VVS ¹⁻²	VS ¹⁻²	SI ¹⁻²	I ¹⁻³
Flawless	Internally Flawless	Very Very Slightly Included	Very Slightly Included	Slightly Included	Included



ADDITIONAL GRADING INFORMATION

Polish **EXCELLENT**
Symmetry **EXCELLENT**
Fluorescence **SLIGHT**
Inscription(s) **IGI LG788688119**
Comments: This Laboratory Grown Diamond was created by Chemical Vapor Deposition (CVD) growth process.
Indications of post-growth treatment.



April 16, 2026
IGI Report No LG788688119
ROUND MIXED CUT
1.05 CARAT
Carat Weight
Color Grade **FANCY INTENSE PINK**
Clarity Grade **VVS 2**
Depth **61.6%**
Table **63%**
Girdle **Slightly Thick To Thick (Faceted)**
Culet **Pointed**
Polish **EXCELLENT**
Symmetry **EXCELLENT**
Fluorescence **SLIGHT**
Inscription(s) **IGI LG788688119**
Comments: This Laboratory Grown Diamond was created by Chemical Vapor Deposition (CVD) growth process.
Indications of post-growth treatment.