



ELECTRONIC COPY

LG788687468
Report verification at igi.org



April 18, 2026

IGI Report Number **LG788687468**

Description **LABORATORY GROWN DIAMOND**

Shape and Cutting Style **CUT CORNERED
RECTANGULAR MODIFIED
BRILLIANT**

Measurements **8.71 X 6.10 X 4.14 MM**

GRADING RESULTS

Carat Weight **2.04 CARATS**

Color Grade **FANCY VIVID PINK**

Clarity Grade **VVS 2**

April 18, 2026

IGI Report Number **LG788687468**

Description **LABORATORY GROWN DIAMOND**

Shape and Cutting Style **CUT CORNERED RECTANGULAR
MODIFIED BRILLIANT**

Measurements **8.71 X 6.10 X 4.14 MM**

GRADING RESULTS

Carat Weight **2.04 CARATS**

Color Grade **FANCY VIVID PINK**

Clarity Grade **VVS 2**

ADDITIONAL GRADING INFORMATION

Polish **EXCELLENT**

Symmetry **EXCELLENT**

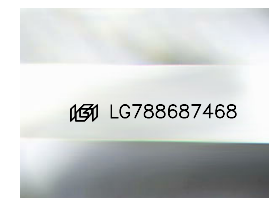
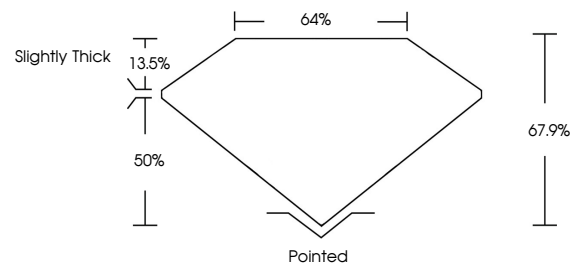
Fluorescence **SLIGHT**

Inscription(s) **IGI LG788687468**

Comments: This Laboratory Grown Diamond was created by Chemical Vapor Deposition (CVD) growth process.

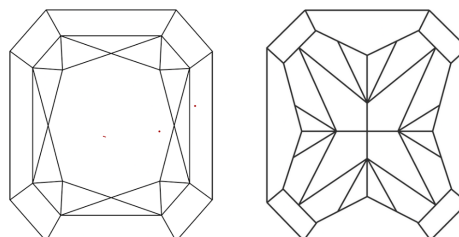
Indications of post-growth treatment.

PROPORTIONS



Sample Image Used

CLARITY CHARACTERISTICS



KEY TO SYMBOLS

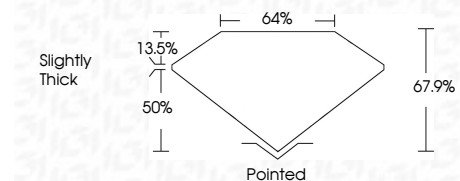
Red symbols indicate internal characteristics.
Green symbols indicate external characteristics.

COLOR

D E F G H I J Faint Very Light Light

CLARITY

FL	IF	VVS ¹⁻²	VS ¹⁻²	SI ¹⁻²	I ¹⁻³
Flawless	Internally Flawless	Very Very Slightly Included	Very Slightly Included	Slightly Included	Included



ADDITIONAL GRADING INFORMATION

Polish **EXCELLENT**

Symmetry **EXCELLENT**

Fluorescence **SLIGHT**

Inscription(s) **IGI LG788687468**

Comments: This Laboratory Grown Diamond was created by Chemical Vapor Deposition (CVD) growth process. Indications of post-growth treatment.



IGI



April 18, 2026
IGI Report No LG788687468
CUT CORNERED RECT. MODIFIED BRILLIANT

8.71 X 6.10 X 4.14 MM
2.04 CARATS
FANCY VIVID PINK
VVS 2
67.9%
64%
Slightly Thick

Pointed
EXCELLENT
EXCELLENT
SLIGHT
IGI LG788687468

Comments: This Laboratory Grown Diamond was created by Chemical Vapor Deposition (CVD) growth process. Indications of post-growth treatment.