



ELECTRONIC COPY

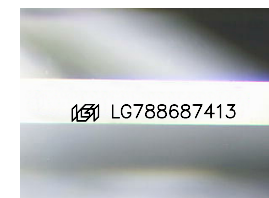
LG788687413
Report verification at igi.org



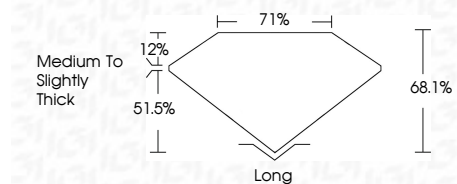
April 16, 2026
IGI Report Number **LG788687413**
Description **LABORATORY GROWN DIAMOND**
Shape and Cutting Style **EMERALD CUT**
Measurements **8.57 X 6.01 X 4.09 MM**

GRADING RESULTS

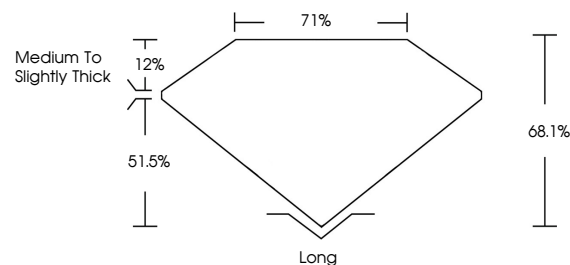
Carat Weight **2.08 CARATS**
Color Grade **E**
Clarity Grade **VS 1**



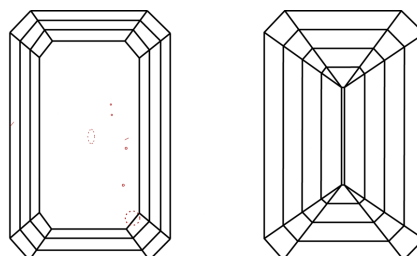
Sample Image Used



PROPORTIONS



CLARITY CHARACTERISTICS



KEY TO SYMBOLS

Red symbols indicate internal characteristics.
Green symbols indicate external characteristics.

COLOR

D E F G H I J Faint Very Light Light

CLARITY

FL	IF	VS ¹⁻²	VS ¹⁻²	SI ¹⁻²	I ¹⁻³
Flawless	Internally Flawless	Very Very Slightly Included	Very Slightly Included	Slightly Included	Included

ADDITIONAL GRADING INFORMATION

Polish **EXCELLENT**
Symmetry **EXCELLENT**
Fluorescence **NONE**
Inscription(s) **IGI LG788687413**
Comments: This Laboratory Grown Diamond was created by Chemical Vapor Deposition (CVD) growth process. Type IIa



IGI



April 16, 2026
IGI Report No LG788687413
EMERALD CUT
8.57 X 6.01 X 4.09 MM
2.08 CARATS
E
VS 1
68.1%
71%
Medium to Slightly Thick
Long
EXCELLENT
EXCELLENT
NONE
IGI LG788687413
Comments: This Laboratory Grown Diamond was created by Chemical Vapor Deposition (CVD) growth process. Type IIa