



ELECTRONIC COPY

LG788687360
Report verification at igi.org



April 18, 2026
IGI Report Number **LG788687360**
Description **LABORATORY GROWN DIAMOND**
Shape and Cutting Style **ROUND BRILLIANT**
Measurements **7.49 - 7.52 X 4.45 MM**
GRADING RESULTS
Carat Weight **1.51 CARAT**
Color Grade **FANCY INTENSE PINK**
Clarity Grade **VVS 2**
Cut Grade **EXCELLENT**

April 18, 2026
IGI Report Number **LG788687360**
Description **LABORATORY GROWN DIAMOND**
Shape and Cutting Style **ROUND BRILLIANT**
Measurements **7.49 - 7.52 X 4.45 MM**

GRADING RESULTS

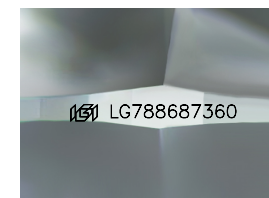
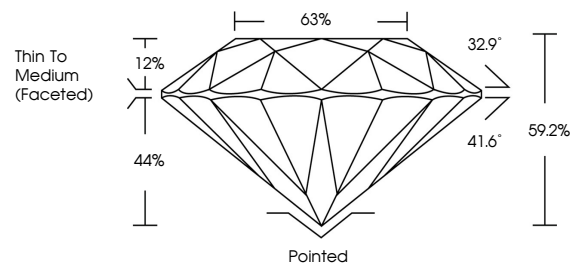
Carat Weight **1.51 CARAT**
Color Grade **FANCY INTENSE PINK**
Clarity Grade **VVS 2**
Cut Grade **EXCELLENT**

ADDITIONAL GRADING INFORMATION

Polish **EXCELLENT**
Symmetry **EXCELLENT**
Fluorescence **SLIGHT**
Inscription(s) **IGI LG788687360**

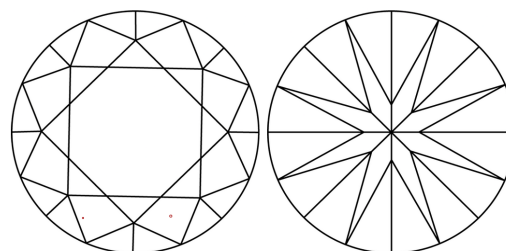
Comments: This Laboratory Grown Diamond was created by Chemical Vapor Deposition (CVD) growth process.
Indications of post-growth treatment.

PROPORTIONS



Sample Image Used

CLARITY CHARACTERISTICS



KEY TO SYMBOLS

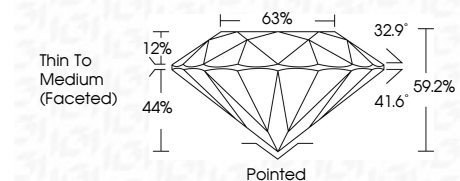
Red symbols indicate internal characteristics.
Green symbols indicate external characteristics.

COLOR

D E F G H I J Faint Very Light Light

CLARITY

FL	IF	VVS ¹⁻²	VS ¹⁻²	SI ¹⁻²	I ¹⁻³
Flawless	Internally Flawless	Very Very Slightly Included	Very Slightly Included	Slightly Included	Included



ADDITIONAL GRADING INFORMATION

Polish **EXCELLENT**
Symmetry **EXCELLENT**
Fluorescence **SLIGHT**
Inscription(s) **IGI LG788687360**
Comments: This Laboratory Grown Diamond was created by Chemical Vapor Deposition (CVD) growth process.
Indications of post-growth treatment.



IGI



April 18, 2026
IGI Report No LG788687360
ROUND BRILLIANT
7.49 - 7.52 X 4.45 MM
1.51 CARAT
FANCY INTENSE PINK
VVS 2
EXCELLENT
63%
Thin To Medium (Faceted)
Pointed
EXCELLENT
EXCELLENT
SLIGHT
IGI LG788687360
Comments: This Laboratory Grown Diamond was created by Chemical Vapor Deposition (CVD) growth process.
Indications of post-growth treatment.