



ELECTRONIC COPY

LG788686384
Report verification at igi.org



April 13, 2026

IGI Report Number **LG788686384**

Description **LABORATORY GROWN DIAMOND**

Shape and Cutting Style **CUT CORNERED
RECTANGULAR MODIFIED
BRILLIANT**

Measurements **9.91 X 6.81 X 4.63 MM**

GRADING RESULTS

Carat Weight **3.00 CARATS**

Color Grade **FANCY VIVID PINK**

Clarity Grade **VS 1**

April 13, 2026
IGI Report Number **LG788686384**
Description **LABORATORY GROWN DIAMOND**
Shape and Cutting Style **CUT CORNERED RECTANGULAR
MODIFIED BRILLIANT**
Measurements **9.91 X 6.81 X 4.63 MM**

GRADING RESULTS

Carat Weight **3.00 CARATS**

Color Grade **FANCY VIVID PINK**

Clarity Grade **VS 1**

ADDITIONAL GRADING INFORMATION

Polish **EXCELLENT**

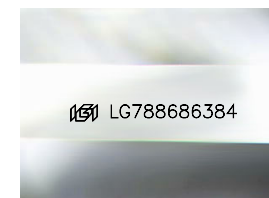
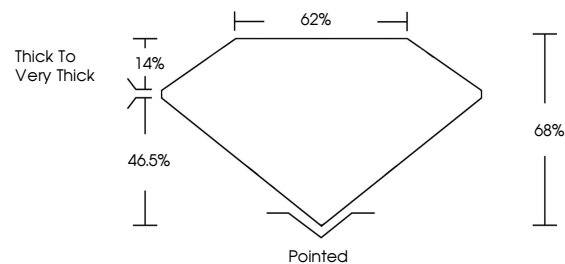
Symmetry **EXCELLENT**

Fluorescence **SLIGHT**

Inscription(s) **IGI LG788686384**

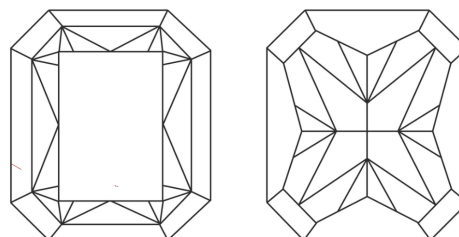
Comments: This Laboratory Grown Diamond was created by Chemical Vapor Deposition (CVD) growth process. Indications of post-growth treatment.

PROPORTIONS



Sample Image Used

CLARITY CHARACTERISTICS



KEY TO SYMBOLS

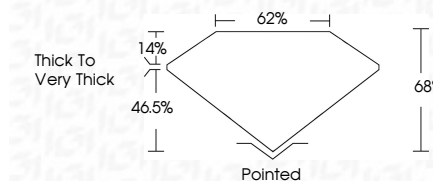
Red symbols indicate internal characteristics.
Green symbols indicate external characteristics.

COLOR

D E F G H I J Faint Very Light Light

CLARITY

FL	IF	VS ¹⁻²	VS ¹⁻²	SI ¹⁻²	I ¹⁻³
Flawless	Internally Flawless	Very Very Slightly Included	Very Slightly Included	Slightly Included	Included



ADDITIONAL GRADING INFORMATION

Polish **EXCELLENT**

Symmetry **EXCELLENT**

Fluorescence **SLIGHT**

Inscription(s) **IGI LG788686384**

Comments: This Laboratory Grown Diamond was created by Chemical Vapor Deposition (CVD) growth process. Indications of post-growth treatment.



IGI



April 13, 2026
IGI Report No LG788686384
CUT CORNERED RECT. MODIFIED BRILLIANT
9.91 X 6.81 X 4.63 MM
3.00 CARATS
FANCY VIVID PINK
VS 1
68%
62%
Thick to Very Thick
Pointed
EXCELLENT
EXCELLENT
SLIGHT
IGI LG788686384
Comments: This Laboratory Grown Diamond was created by Chemical Vapor Deposition (CVD) growth process. Indications of post-growth treatment.