



ELECTRONIC COPY

LG788686328
Report verification at igi.org



April 15, 2026
IGI Report Number **LG788686328**
Description **LABORATORY GROWN DIAMOND**
Shape and Cutting Style **SQUARE CUSHION MODIFIED BRILLIANT**
Measurements **5.58 X 5.55 X 3.69 MM**
GRADING RESULTS
Carat Weight **1.04 CARAT**
Color Grade **FANCY VIVID PINK**
Clarity Grade **VS 2**

LABORATORY GROWN DIAMOND REPORT

April 15, 2026
IGI Report Number **LG788686328**
Description **LABORATORY GROWN DIAMOND**
Shape and Cutting Style **SQUARE CUSHION MODIFIED BRILLIANT**
Measurements **5.58 X 5.55 X 3.69 MM**

GRADING RESULTS

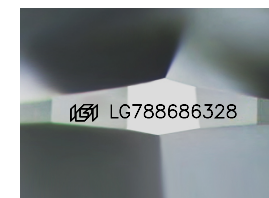
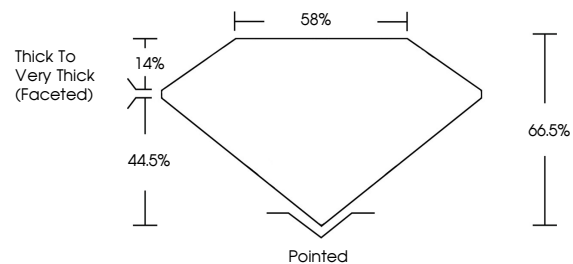
Carat Weight **1.04 CARAT**
Color Grade **FANCY VIVID PINK**
Clarity Grade **VS 2**

ADDITIONAL GRADING INFORMATION

Polish **EXCELLENT**
Symmetry **EXCELLENT**
Fluorescence **STRONG**
Inscription(s) **IGI LG788686328**

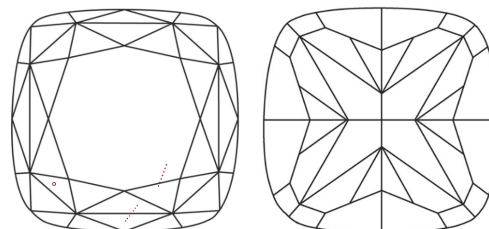
Comments: This Laboratory Grown Diamond was created by Chemical Vapor Deposition (CVD) growth process. Indications of post-growth treatment.

PROPORTIONS



Sample Image Used

CLARITY CHARACTERISTICS



KEY TO SYMBOLS

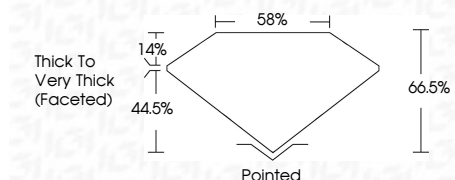
Red symbols indicate internal characteristics.
Green symbols indicate external characteristics.

COLOR

D E F G H I J Faint Very Light Light

CLARITY

FL	IF	VS ¹⁻²	VS ¹⁻²	SI ¹⁻²	I ¹⁻³
Flawless	Internally Flawless	Very Very Slightly Included	Very Slightly Included	Slightly Included	Included



ADDITIONAL GRADING INFORMATION

Polish **EXCELLENT**
Symmetry **EXCELLENT**
Fluorescence **STRONG**
Inscription(s) **IGI LG788686328**
Comments: This Laboratory Grown Diamond was created by Chemical Vapor Deposition (CVD) growth process. Indications of post-growth treatment.



April 15, 2026
IGI Report No LG788686328
SQUARE CUSHION MODIFIED BRILLIANT
1.04 CARAT
FANCY VIVID PINK
VS 2
5.58 X 5.55 X 3.69 MM
66.5%
44.5%
14%
Thick to Very Thick (Faceted)
Pointed
EXCELLENT
EXCELLENT
STRONG
IGI LG788686328
Comments: This Laboratory Grown Diamond was created by Chemical Vapor Deposition (CVD) growth process. Indications of post-growth treatment.