



ELECTRONIC COPY

LG788685024
Report verification at igi.org



April 23, 2026
IGI Report Number **LG788685024**
Description **LABORATORY GROWN DIAMOND**
Shape and Cutting Style **SQUARE CUSHION MODIFIED BRILLIANT**
Measurements **10.95 X 10.93 X 7.11 MM**
GRADING RESULTS
Carat Weight **8.02 CARATS**
Color Grade **FANCY VIVID YELLOW**
Clarity Grade **VS 2**

LABORATORY GROWN DIAMOND REPORT

April 23, 2026
IGI Report Number **LG788685024**
Description **LABORATORY GROWN DIAMOND**
Shape and Cutting Style **SQUARE CUSHION MODIFIED BRILLIANT**
Measurements **10.95 X 10.93 X 7.11 MM**

GRADING RESULTS

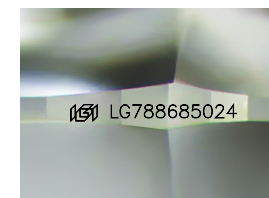
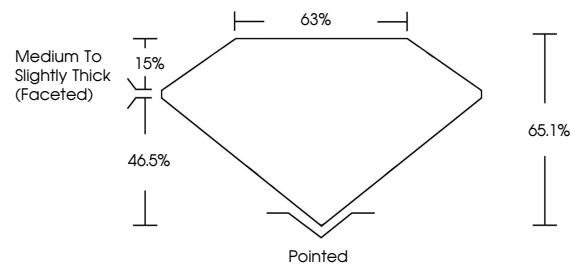
Carat Weight **8.02 CARATS**
Color Grade **FANCY VIVID YELLOW**
Clarity Grade **VS 2**

ADDITIONAL GRADING INFORMATION

Polish **EXCELLENT**
Symmetry **EXCELLENT**
Fluorescence **NONE**
Inscription(s) **IGI LG788685024**

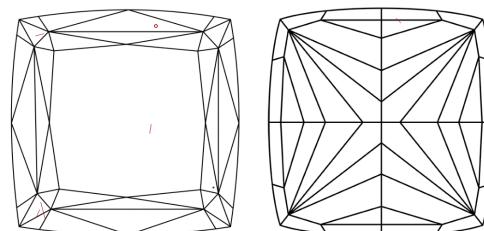
Comments: This Laboratory Grown Diamond was created by Chemical Vapor Deposition (CVD) growth process.

PROPORTIONS



Sample Image Used

CLARITY CHARACTERISTICS



KEY TO SYMBOLS

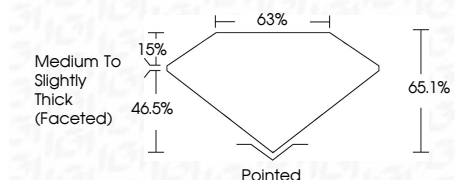
Red symbols indicate internal characteristics.
Green symbols indicate external characteristics.

COLOR

D E F G H I J Faint Very Light Light

CLARITY

FL	IF	VS ¹⁻²	VS ¹⁻²	SI ¹⁻²	I ¹⁻³
Flawless	Internally Flawless	Very Very Slightly Included	Very Slightly Included	Slightly Included	Included



ADDITIONAL GRADING INFORMATION

Polish **EXCELLENT**
Symmetry **EXCELLENT**
Fluorescence **NONE**
Inscription(s) **IGI LG788685024**
Comments: This Laboratory Grown Diamond was created by Chemical Vapor Deposition (CVD) growth process.



April 23, 2026
IGI Report No **LG788685024**
SQUARE CUSHION MODIFIED BRILLIANT
8.02 CARATS
Carat Weight
FANCY VIVID YELLOW
Color Grade
VS 2
Clarity Grade
65.1%
Depth
63%
Table
Medium to Slightly Thick (Faceted)
Girdle
Pointed
Culet
EXCELLENT
Polish
EXCELLENT
Symmetry
NONE
Fluorescence
NONE
Inscription(s)
IGI LG788685024
Comments: This Laboratory Grown Diamond was created by Chemical Vapor Deposition (CVD) growth process.