



ELECTRONIC COPY

LG788684831
Report verification at igi.org



April 21, 2026

IGI Report Number **LG788684831**

Description **LABORATORY GROWN DIAMOND**

Shape and Cutting Style **BAGUETTE**

Measurements **11.75 X 3.82 X 2.15 MM**

GRADING RESULTS

Carat Weight **1.10 CARAT**

Color Grade **FANCY VIVID BLUE**

Clarity Grade **VVS 2**

April 21, 2026
IGI Report Number **LG788684831**
Description **LABORATORY GROWN DIAMOND**
Shape and Cutting Style **BAGUETTE**
Measurements **11.75 X 3.82 X 2.15 MM**

GRADING RESULTS

Carat Weight **1.10 CARAT**

Color Grade **FANCY VIVID BLUE**

Clarity Grade **VVS 2**

ADDITIONAL GRADING INFORMATION

Polish **EXCELLENT**

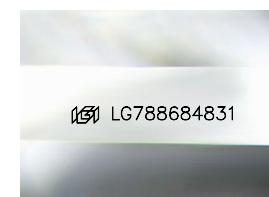
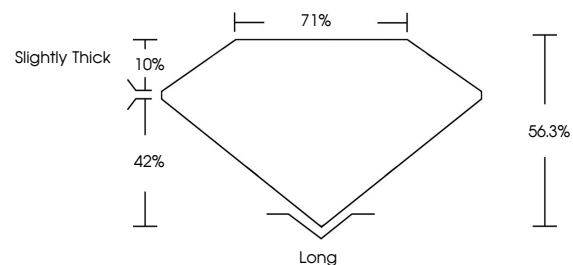
Symmetry **EXCELLENT**

Fluorescence **NONE**

Inscription(s) **LG788684831**

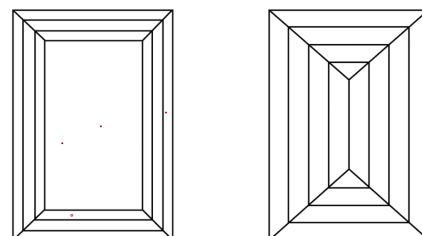
Comments: This Laboratory Grown Diamond was created by Chemical Vapor Deposition (CVD) growth process.
Indications of post-growth treatment.

PROPORTIONS



Sample Image Used

CLARITY CHARACTERISTICS



KEY TO SYMBOLS

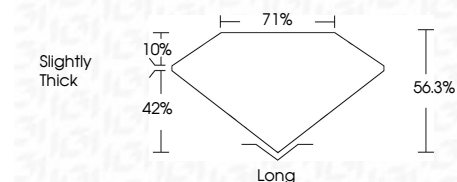
Red symbols indicate internal characteristics.
Green symbols indicate external characteristics.

COLOR

D E F G H I J Faint Very Light Light

CLARITY

FL	IF	VVS ¹⁻²	VS ¹⁻²	SI ¹⁻²	I ¹⁻³
Flawless	Internally Flawless	Very Very Slightly Included	Very Slightly Included	Slightly Included	Included



ADDITIONAL GRADING INFORMATION

Polish **EXCELLENT**

Symmetry **EXCELLENT**

Fluorescence **NONE**

Inscription(s) **LG788684831**

Comments: This Laboratory Grown Diamond was created by Chemical Vapor Deposition (CVD) growth process.
Indications of post-growth treatment.



April 21, 2026
IGI Report No **LG788684831**
BAGUETTE
1.10 CARAT
11.75 X 3.82 X 2.15 MM
FANCY VIVID BLUE
VVS 2
56.3%
71%
Slightly Thick
Long
EXCELLENT
EXCELLENT
NONE
None
None
None
 LG788684831
Comments: This Laboratory Grown Diamond was created by Chemical Vapor Deposition (CVD) growth process.
Indications of post-growth treatment.